



ILLINOIS ENVIRONMENTAL PROTECTION AGENCY

1021 NORTH GRAND AVENUE EAST, P.O. BOX 19276, SPRINGFIELD, ILLINOIS 62794-9276 • (217) 782-3397

JB PRITZKER, GOVERNOR

JOHN J. KIM, DIRECTOR

August 12, 2020

Governor JB Pritzker and the Illinois General Assembly:

I am pleased to present this biennial report on Illinois EPA's Used Tire Program. Used and waste tires that are not managed properly present a threat to human health and the environment due to the threat of fire and mosquito proliferation. In one breeding season, more than 1000 adult mosquitoes can emerge from a single used tire, if not managed properly. With the continued presence of West Nile virus and the new threat of Zika virus in Illinois, the preventive and corrective actions taken by the Illinois EPA are critical to ensure that used and waste tires do not contribute to the proliferation of disease-carrying mosquitoes.

Since the inception of Illinois EPA's Used Tire Program in 1990, more than 20 million used and waste tires have been removed from dumps throughout the state and more than 1,500 used and waste tire cleanups have been conducted by the Illinois EPA. The Illinois EPA averages more than 1,000 inspections at used and waste tire sites annually to ensure compliance with environmental requirements and to prevent the formation of new waste tire dumps. In addition to these traditional program activities, the Illinois EPA's Used Tire Program has completely revamped our web site to provide valuable information to the used tire industry as well as the general public. Moving forward, we are also looking forward to assisting in the development and maintenance of stable and diverse markets for used tires in Illinois.

The Illinois EPA will strive to continue to be at the forefront of state used tire programs by: 1) ensuring the development and maintenance of diverse and stable markets for the more than 14 million used tires generated annually in Illinois; 2) monitoring and remediating all waste tire dumps as expeditiously as possible; 3) regulating the used tire industry to ensure compliance with state used tire management requirements so that used and waste tires do not contribute to the proliferation of mosquito-related diseases or to environmental contamination resulting from tire fires. Illinois EPA will continue to work with the Illinois Department of Public Health and units of local government to ensure that improperly managed used and waste tires are properly treated and reused or recycled, so as not to present a health threat to the citizens of Illinois.

Sincerely,

John J. Kim, Director

4302 N. Main Street, Rockford, IL 61103 (815) 987-7760
595 S. State Street, Elgin, IL 60123 (847) 608-3131
2125 S. First Street, Champaign, IL 61820 (217) 278-5800
2009 Mall Street Collinsville, IL 62234 (618) 346-5120

9511 Harrison Street, Des Plaines, IL 60016 (847) 294-4000
412 SW Washington Street, Suite D, Peoria, IL 61602 (309) 671-3022
2309 W. Main Street, Suite 116, Marion, IL 62959 (618) 993-7200
100 W. Randolph Street, Suite 4-500, Chicago, IL 60601



Used Tire Program Biennial Report



2018 - 2019



Used Tire Program Mission

The mission of Illinois EPA's Used Tire Program is to:

- 1) ensure that used tires are managed in compliance with all environmental requirements so as to prevent the existence of breeding habitats for disease-carrying mosquitoes and minimizes the threat of tire-related fires;
- 2) ensure improperly managed used and waste tires are removed from the environment for beneficial reuse, recovery or recycling; and
- 3) promote the existence of sound, stable and legitimate markets for used tires in Illinois.

Used Tires and West Nile virus/Zika virus

Improperly-managed used and waste tires present a public health threat by providing a prime breeding habitat for disease-carrying mosquitoes. Adult mosquitoes lay eggs in the stagnant water present in used and waste tires. When organic matter (leaves, grass, etc.) are present in the stagnant water, mosquito eggs can develop into adults. The mosquito species most often present in used and waste tires, *Culex pipiens* (Northern House Mosquito), is the primary carrier of the West Nile Virus. In addition, *Aedes aegypti* and *Aedes albopictus* (Asian Tiger Mosquito) are known carriers of Zika virus. Due to the link between the improper management of used and waste tires and the proliferation of mosquito-related diseases, the Illinois EPA routinely monitors used tire sites throughout Illinois for compliance with statutory and regulatory used tire management standards to ensure that mosquito proliferation does not occur as a result of poor tire management.



Illinois EPA continuously strives to increase public awareness of the public health threat that improperly managed used and waste tires present. As part of this effort, Illinois EPA conducts a used tire collection program for units of local government to remove and properly dispose of used and waste tires collected from public and abandoned properties. Illinois EPA encourages citizens and units of local government, as well as law enforcement authorities, to monitor and report suspected sites that may present a threat to public health. Through these efforts, we can help minimize the occurrence of mosquito-related diseases in Illinois.

Highlights

- ◆ The Environmental Protection Act was amended to strengthen the oversight of used tire storage and processing facilities. The amendments require facilities with more than 10,000 passenger tires on site, or that process more than 500 tons of used tires in a calendar year, to obtain a permit from the Illinois EPA. More than 20 permits have been issued to date.
- ◆ The Illinois Pollution Control Board updated its rules governing the management of used tires, pursuant to the changes made to the Environmental Protection Act.
- ◆ During 2018 and 2019 the Illinois EPA conducted **more than 3,500 used and waste tire inspection activities.**
- ◆ The Illinois EPA continues to provide waste tire removal actions for state and local entities to assist with their waste tire disposal needs.



Used Tire Management Standards Rulemaking

On September 8, 2015, the Illinois Pollution Control Board (“Board”) revised its used tire management standards found in 35 Illinois Administrative Code Part 848. These amendments were the result of a six-month project by Illinois EPA to develop and propose updates to the rules to make them consistent with the recent changes to the Environmental Protection Act. The Board held public hearings on the proposed rules in Springfield and Chicago.

In addition to updating the rules consistent with statutory changes, the rules proposed by the Illinois EPA also clarified certain portions of the regulations that were vague and confusing, made the rules consistent with used tire storage guidelines established by the International Fire Code (IFC), provided for the elimination of all mosquito larvae in used tires located at storage/processing facilities, and provided standards for the issuance of permits for large used tire storage and processing facilities.

Significant components of the updated rules include:

- ◆ Prohibiting the accumulation of water in any used tire in Illinois;
- ◆ Clarifying used tire stockpile management standards (e.g., storage unit dimensions, aisle space between storage units, etc.);
- ◆ Requiring Tire Tracking Receipts to track used tire shipments from “cradle to grave”;
- ◆ Requiring an Annual Tire Tracking Report by all registered used tire transporters;
- ◆ Establishing stricter standards for tire transporters to ensure their proper registration and the proper transportation of used tires;
- ◆ Clarifying and simplifying exemptions for tire retreaders and for stamping and die-cutting facilities;
- ◆ Clarifying financial assurance requirements for large storage facilities; and
- ◆ Creating procedures for the submission, review, and issuance of used tire permits at large used tire storage sites and processing facilities.

The updated used tire rules are available on the Board’s web site at:

<http://www.ipcb.state.il.us/documents/dsweb/Get/Document-12203>

To obtain copies of environmental regulations:

Illinois Pollution Control Board

Phone: 217/524-8500

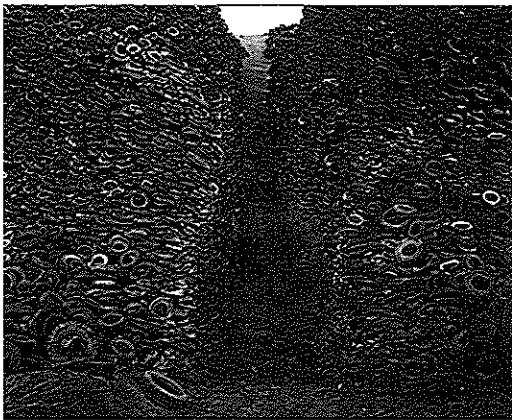
www.ipcb.state.il.us

Facility Oversight

Pursuant to the recent changes to the Environmental Protection Act and Pollution Control Board rules, Illinois EPA has begun the process of permitting large used tire storage and processing facilities. This permitting, along with inspections, help ensure facilities operate in compliance with environmental requirements and do not pose a threat to human health and the environment. To date, Illinois EPA has issued more than 20 permits.

The Illinois EPA continues to conduct inspections that focus on tire storage and processing facilities of all sizes, disposal sites, generators (retailers), and transporters. The universe includes:

- more than 3,500 generators/retailers
- more than 450 transporters
- more than 260 storage facilities
- more than 30 processors
- approximately 14 million used tires generated annually



The Illinois EPA also registers used tire transporters to help ensure the proper transportation and recycling/disposal of used and waste tires. In addition, the Illinois EPA evaluates tire retailers' collection of a \$2.50 per tire fee imposed on the sale of new and used tires, and submittal of the fee to the Illinois Department of Revenue. This statutorily-mandated fee is critical to the State's ability to regulate the used tire industry, ensure the proper reuse and recycling of used tires, monitor and eliminate waste tire dumps, and fund public education/awareness efforts and research about the proliferation of mosquito-related diseases.

Used Tire Cleanups

Over the past two years, Illinois EPA's used and waste tire removal activities have been focused on assisting units of local government with the removal and proper disposal of waste tires collected from public and abandoned properties. During calendar years 2018 and 2019, 61 used tire collection events were conducted for units of local government, which resulted in the removal and proper disposal, reuse, or recycling of more than 4,985 tons of used and waste tires. In addition, Illinois EPA conducted 2 forced removal actions at sites that posed a threat to human health and the environment, which resulted in the removal and disposal of more than 5500 tons of used and waste tires. Most used and waste tires collected by the Illinois EPA are shredded for use as tire-derived aggregate in civil engineering applications and as tire-derived fuel in cement kilns, pulp and paper mills, and in the utility sector.

If conditions at a used tire storage or disposal site pose an immediate threat to human health or the environment, Illinois EPA has enforcement authorities to mitigate the problem. The traditional enforcement process can be utilized to hold property owners and operators responsible for the removal of accumulated tires. In many instances, Illinois EPA has partnered with local enforcement authorities to share resources and closely monitor illegal dump sites to obtain the most expeditious removal action possible. Effectively and efficiently addressing illegal tire sites continues to be a top priority.



BEFORE



AFTER

Illinois EPA Regional Offices

To report used tire complaints please contact your local Illinois EPA regional office:

Rockford Region

4302 North Main Street
Rockford, Illinois 61103
815/987-7760

Counties Served:

Boone, Bureau, Carroll, DeKalb, Jo Daviess, LaSalle, Lee, Ogle,
Putnam, Stephenson, Whiteside, Winnebago

Des Plaines Region

9511 West Harrison Street
Des Plaines, IL 60016
847/294-4000

Counties Served:

Cook, DuPage, Grundy, Kane, Kankakee, Kendall, Lake,
McHenry, Will

Peoria Region Counties Served:

412 SW Washington Street
Peoria, Illinois 61602
309/671-3022

Fulton, Hancock, Henderson, Henry, Knox, McDonough,
Marshall, Mercer, Peoria, Rock Island, Stark, Tazewell,
Warren, Woodford

Champaign Region

2125 South First Street
Champaign, Illinois 61820
217/278-5820

Counties Served:

Champaign, Clark, Coles, Crawford, Cumberland, DeWitt,
Douglas, Edgar, Effingham, Ford, Iroquois, Jasper, Livingston,
McLean, Macon, Moultrie, Piatt, Shelby, Vermilion

Springfield Region

1021 N. Grand Ave. East
Springfield, Illinois 62702
217/785-8604

Counties Served:

Adams, Brown, Calhoun, Cass, Christian, Greene, Jersey, Logan
Macoupin, Mason, Menard, Montgomery, Morgan, Pike,
Sangamon, Schuyler, Scott

Collinsville Region

2009 Mall Street
Collinsville, Illinois 62234
618/346-5120

Counties Served:

Bond, Clinton, Fayette, Madison, Marion, Monroe, Randolph
St. Clair, Washington

Marion Region

2309 West Main Street
Marion, Illinois 62959
618/993-7200

Counties Served:

Alexander, Clay, Edwards, Franklin, Gallatin, Hamilton, Hardin
Jackson, Jefferson, Johnson, Lawrence, Massac, Perry, Pope,
Pulaski, Richland, Saline, Union, Wabash, Wayne, White,
Williamson

The 2014-2015 Used Tire Program Biennial Report is produced by the
Illinois Environmental Protection Agency
Alec Messina, Acting Director