

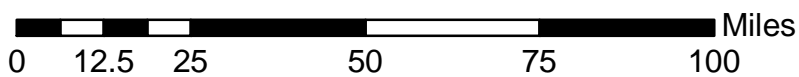
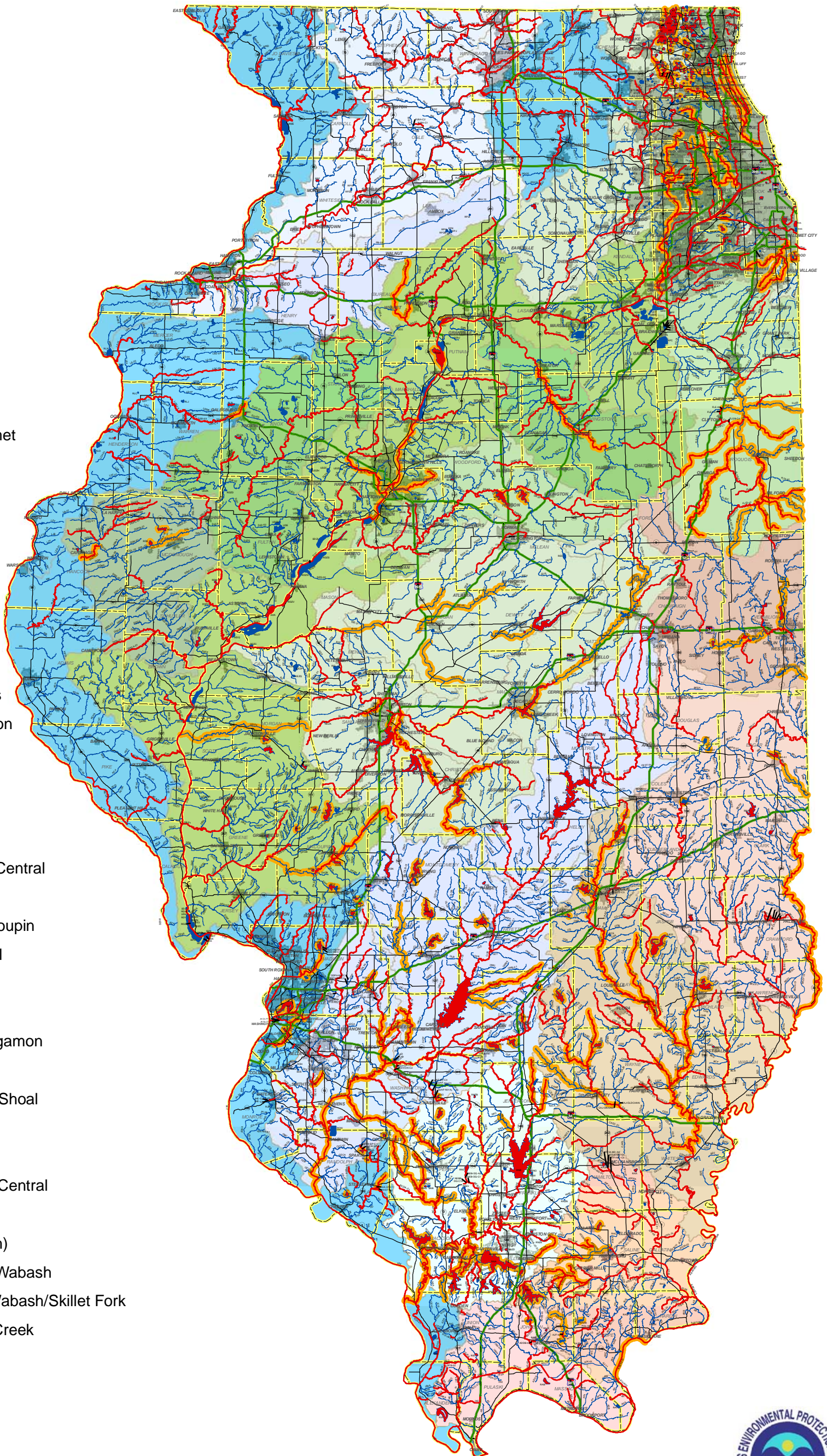
# 2012 Illinois EPA Waters

## Legend

- 2012 303(d) Waters
- TMDL Waters
- IEPA Waters
- Interstate
- State Route
- County Boundary

## Major Watersheds

- 1. Great Lakes/ Calumet
- 2. Des Plaines
- 3. Upper Fox
- 4. Lower Fox
- 5. Kishwaukee
- 6. Rock
- 7. Pecatonica
- 8. Green
- 9. Mississippi North
- 10. Kankakee/Iroquois
- 11. Upper Illinois/Mazon
- 12. Vermilion (Illinois)
- 13. Middle Illinois
- 14. Mackinaw
- 15. Spoon
- 16. Mississippi North Central
- 17. La Moine
- 18. Lower Illinois/Macoupin
- 19. Mississippi Central
- 20. Lower Sangamon
- 21. Upper Sangamon
- 22. Salt Creek of Sangamon
- 23. Upper Kaskaskia
- 24. Middle Kaskaskia/Shoal
- 25. Lower Kaskaskia
- 26. Big Muddy
- 27. Mississippi South Central
- 28. Mississippi South
- 29. Vermilion (Wabash)
- 30. Embarras/Middle Wabash
- 31. Little and Lower Wabash/Skillet Fork
- 32. Saline River/Bay Creek
- 33. Cache



# 2012 Illinois EPA Waters- Chicago Area

