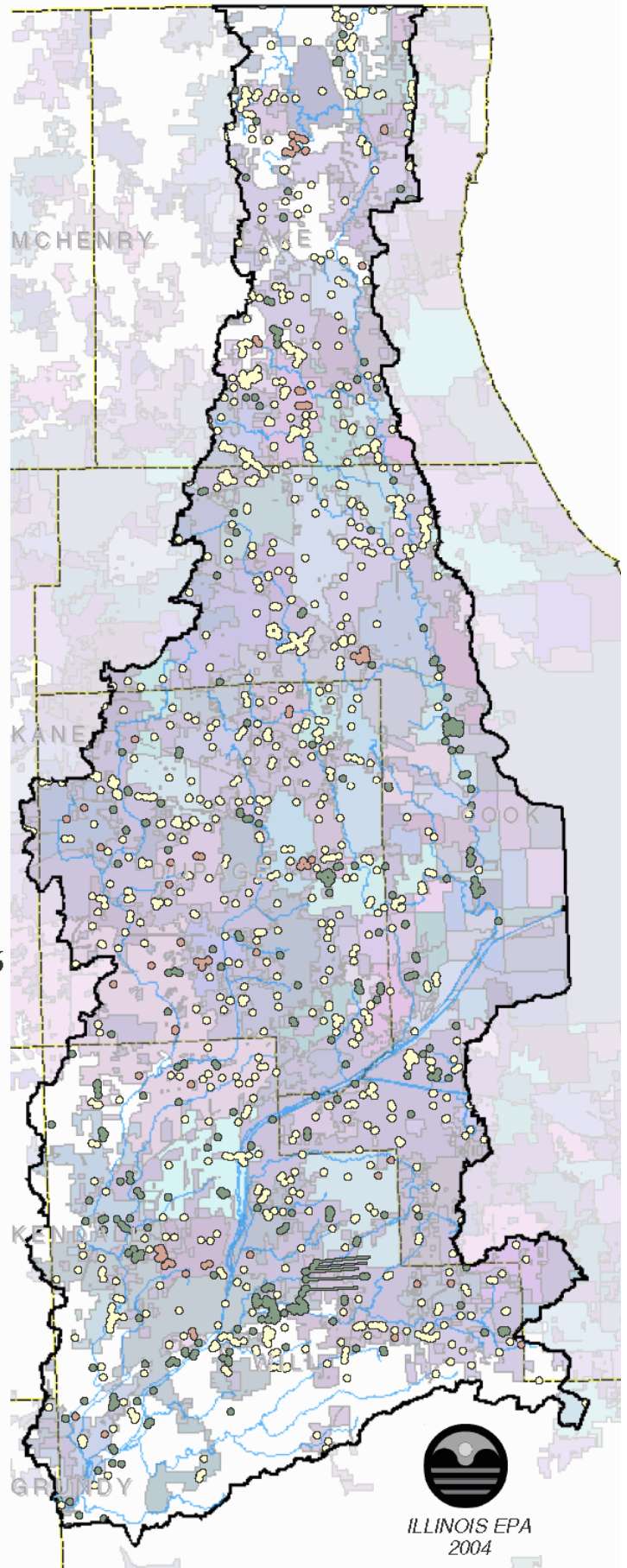
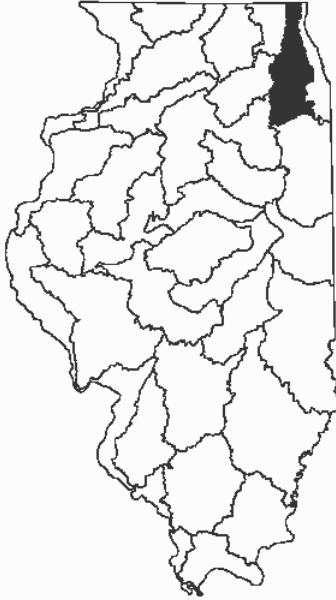


Groundwater Source Water Areas In The Des Plaines Basin



**Total Acres in the
Des Plaines Basin: 836,515**

10% Total Source Water Area Acres: 80,306

70% Limited Susceptibility: 55,926

24% Moderate Susceptibility: 19,500

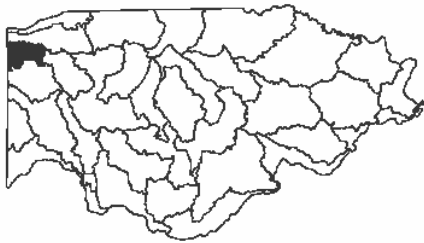
6% High Susceptibility: 4,880

Legend

Groundwater SWA	Stream
Limited	Basin Boundary
Moderate	Municipal Boundary
High	County Boundary



Groundwater Source Water Areas In The Upper Fox Basin



**Total Acres in the
Upper Fox Basin: 391,966**

12% Total Source Water Area Acres: 45,374

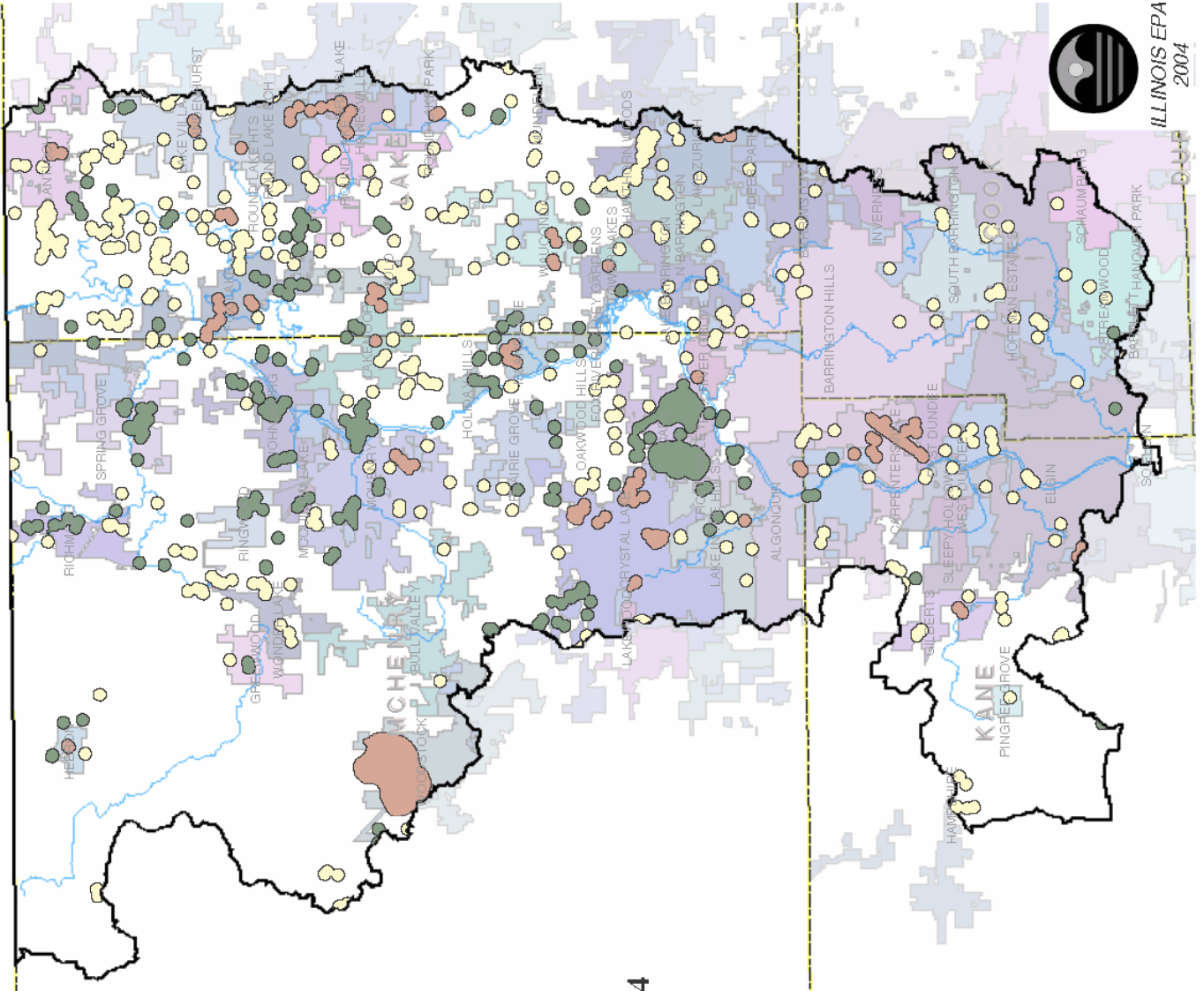
52% Limited Susceptibility: 23,407

30% Moderate Susceptibility: 13,803

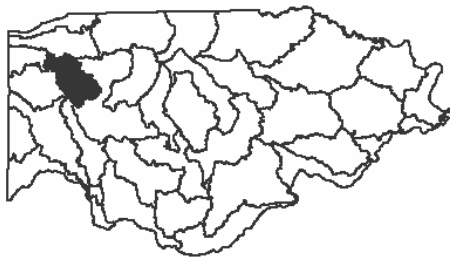
18% High Susceptibility: 8,164

Legend

- Groundwater SWA
- Limited
 - Moderate
 - High
- Stream
- Basin Boundary
- Municipal Boundary
- County Boundary



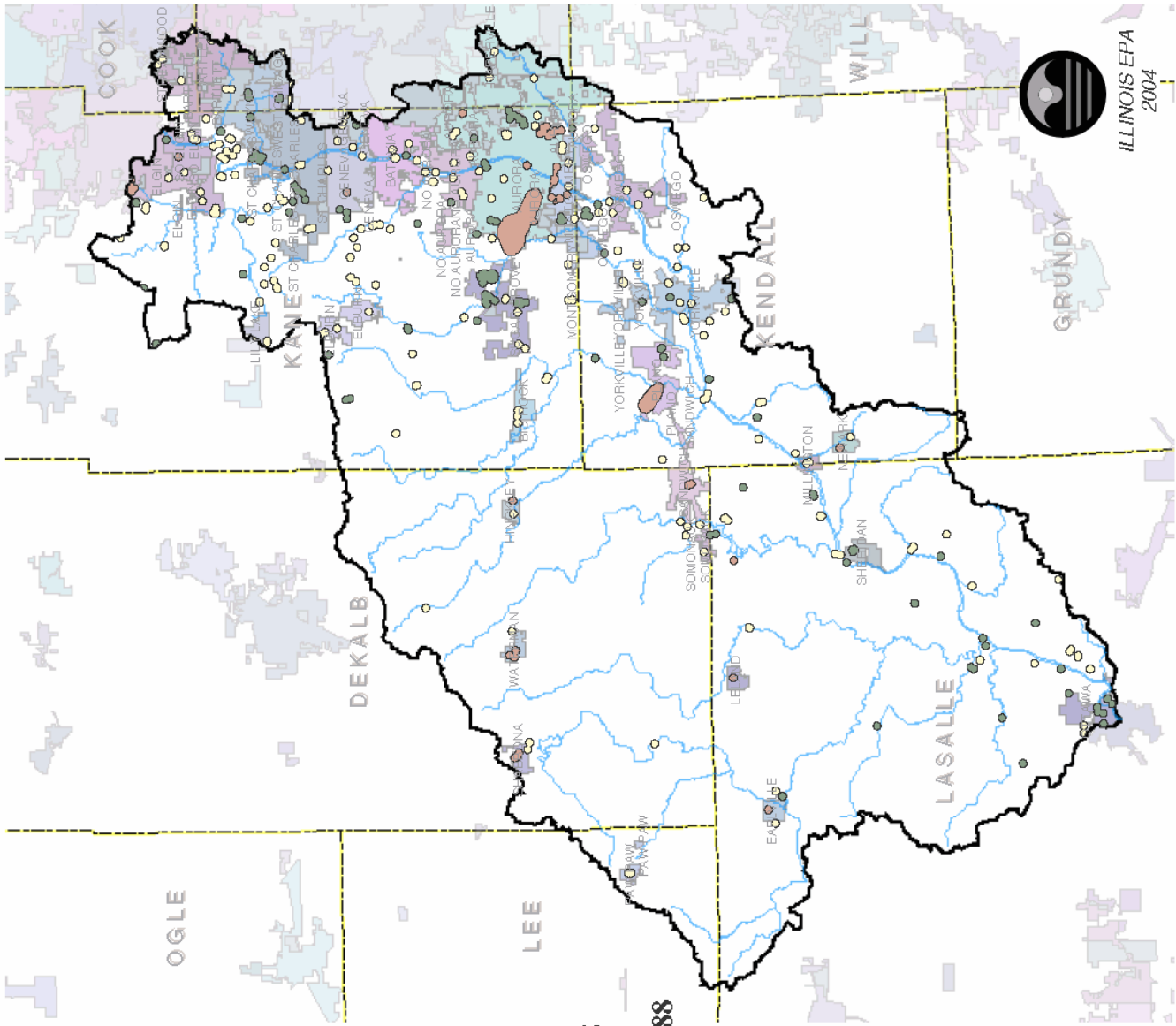
Groundwater Source Water Areas In The Lower Fox Basin



Total Acres in the Lower Fox Basin: 701,195
4% Total Source Water Area Acres: 24,788
51% Limited Susceptibility: 12,666
28% Moderate Susceptibility: 6,993
21% High Susceptibility: 5,129

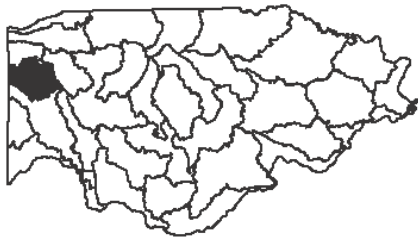
Legend

- Groundwater SWA
 - Limited
 - Moderate
 - High
- Stream
- Basin Boundary
- Municipal Boundary
- County Boundary



ILLINOIS EPA
2004

Groundwater Source Water Areas In The Kishwaukee Basin



**Total Acres in the
Kishwaukee: 779,747**

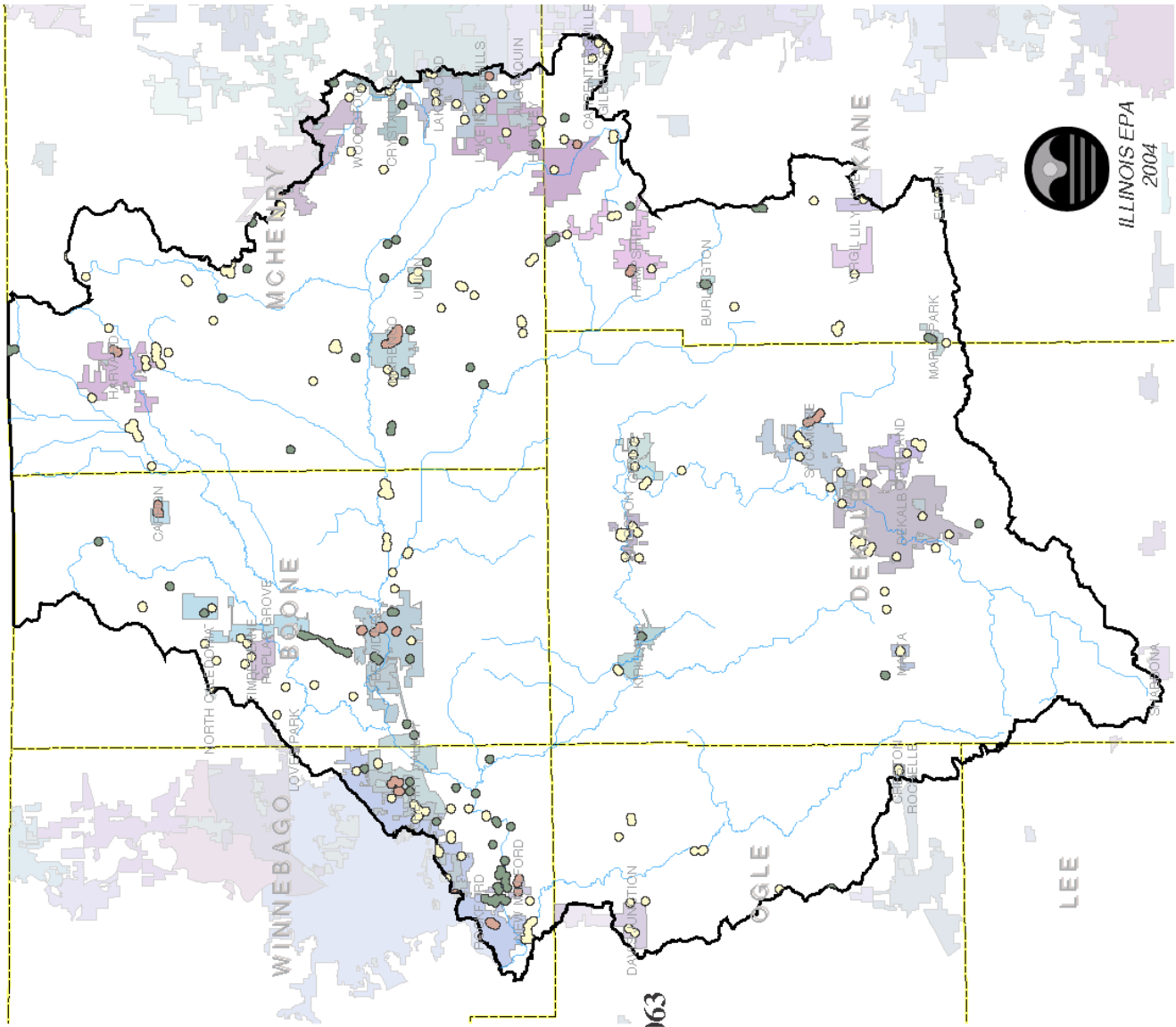
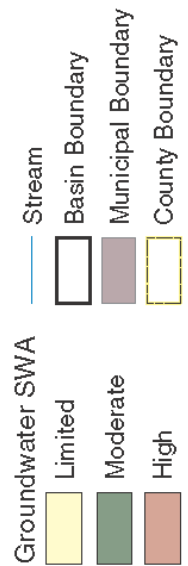
2% Total Source Water Area Acres: 19,063

62% Limited Susceptibility: 11,802

27% Moderate Susceptibility: 5,063

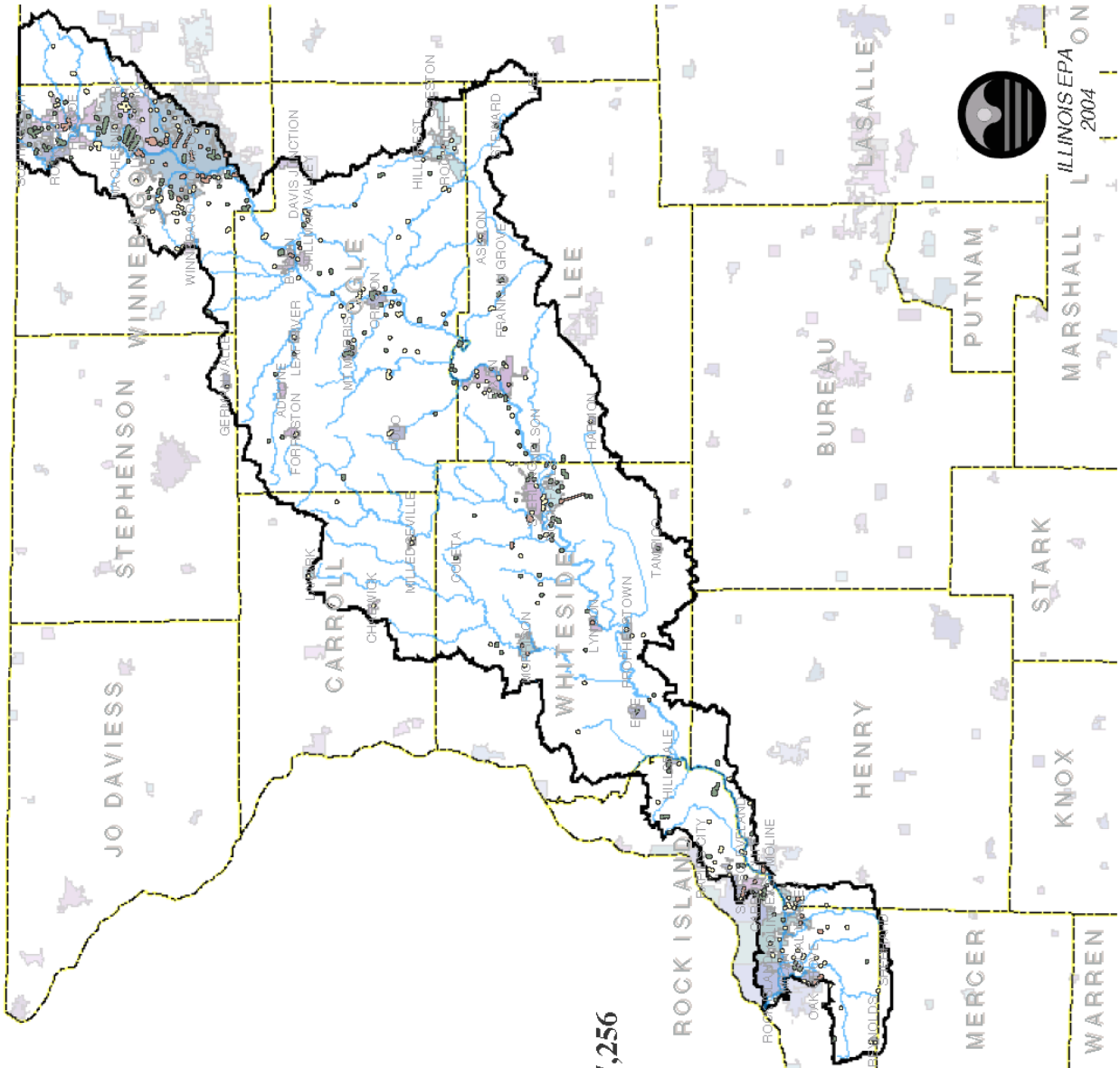
11% High Susceptibility: 2,198

Legend



ILLINOIS EPA
2004

Groundwater Source Water Areas In The Rock Basin

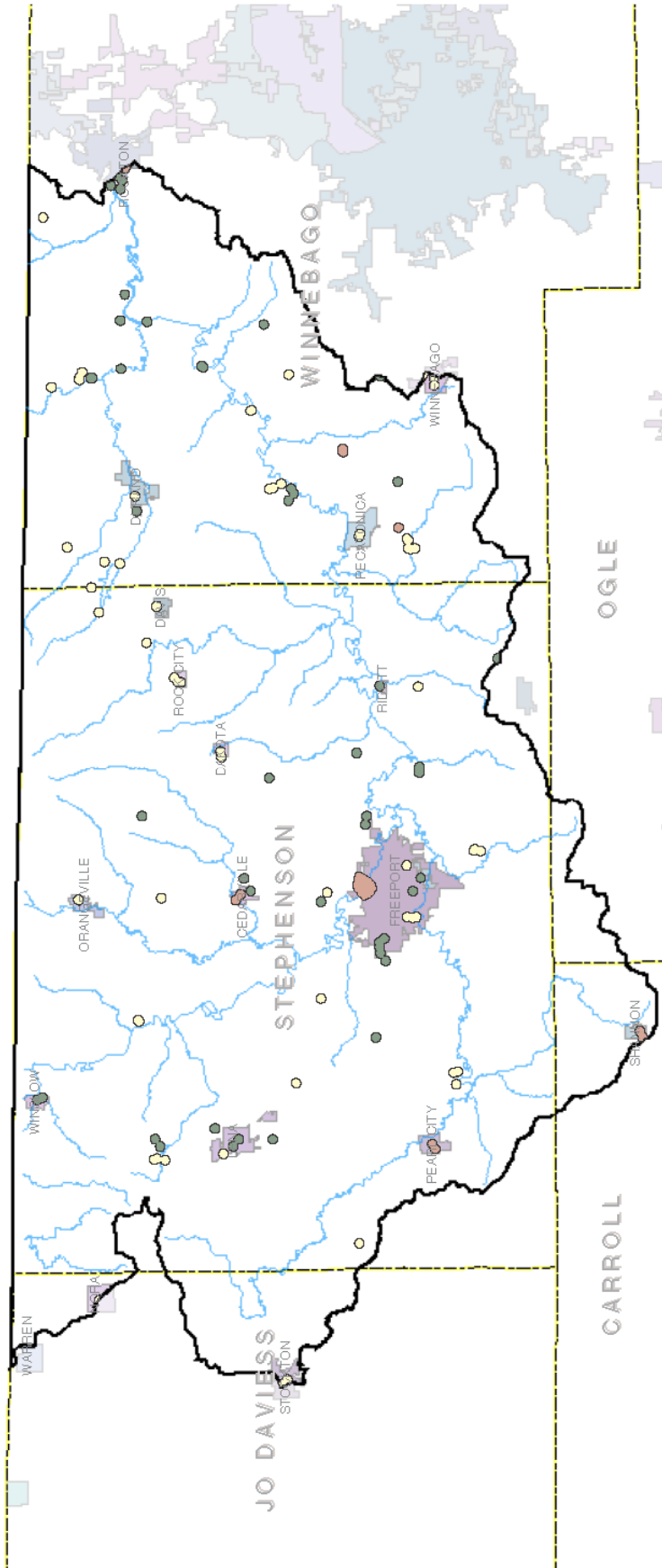


Total Acres in the Rock Basin: 1,374,187
3% Total Source Water Area Acres: 37,256
42% Limited Susceptibility: 14,823
32% Moderate Susceptibility: 16,975
26% High Susceptibility: 5,458

Legend

- Groundwater SWA
 - Limited
 - Moderate
 - High
- Stream
- Basin Boundary
- Municipal Boundary
- County Boundary





Total Acres in the Pecatonica Basin: 509,675

2% Total Source Water Area Acres: 7,482

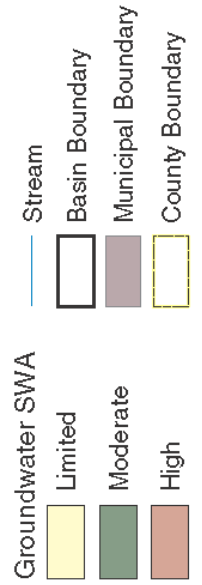
46% Limited Susceptibility: 3,420

40% Moderate Susceptibility: 3,033

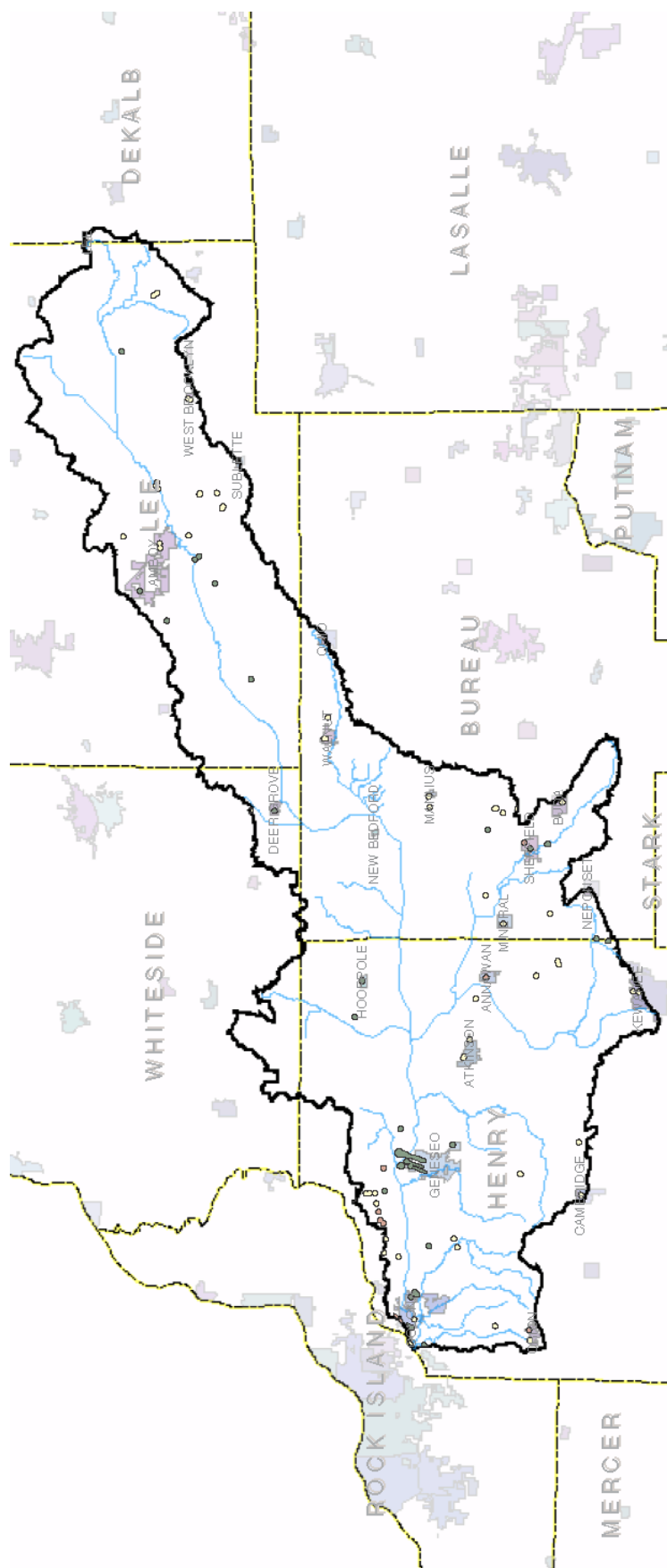
14% High Susceptibility: 1,028

Groundwater Source Water Areas In The Pecatonica Basin

Legend



ILLINOIS EPA
2004

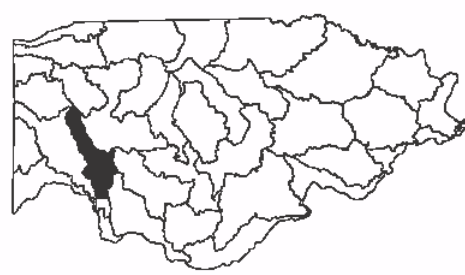


**Groundwater Source Water Areas
In The Green Basin**

Total Acres in the Green Basin: 715,736

1% Total Source Water Area Acres: 6,916

- 40% Limited Susceptibility: 2,761**
- 52% Moderate Susceptibility: 3,571**
- 8% High Susceptibility: 584**

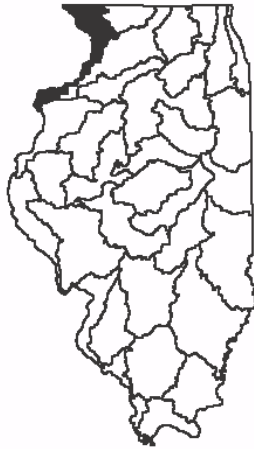


Legend

- Groundwater SWA
 - Limited (Yellow)
 - Moderate (Green)
 - High (Brown)
- Stream (Blue line)
- Basin Boundary (Black outline)
- Municipal Boundary (Grey shaded area)
- County Boundary (Yellow dashed line)



Groundwater Source Water Areas In The Mississippi North Basin



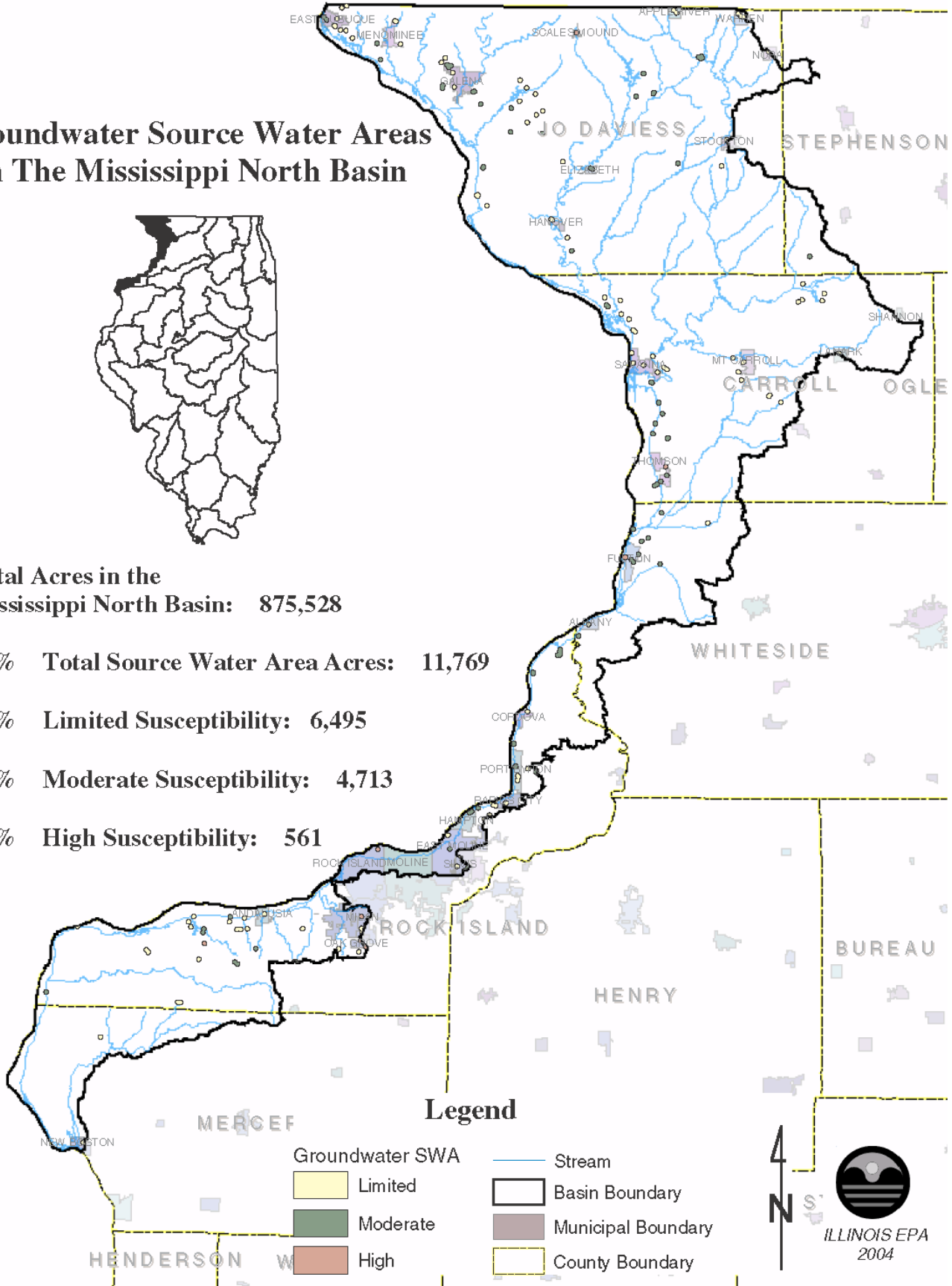
**Total Acres in the
Mississippi North Basin: 875,528**

1% Total Source Water Area Acres: 11,769

55% Limited Susceptibility: 6,495

40% Moderate Susceptibility: 4,713

5% High Susceptibility: 561

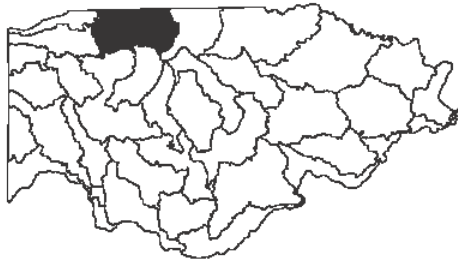


Legend

- | | |
|--|---|
| Groundwater SWA | Stream |
| Limited | Basin Boundary |
| Moderate | Municipal Boundary |
| High | County Boundary |



Groundwater Source Water Areas In The Kankakee/Iroquois Basin



Total Acres in the Kankakee/Iroquois Basin: 1,375,068

1% Total Source Water Area Acres: 14,917

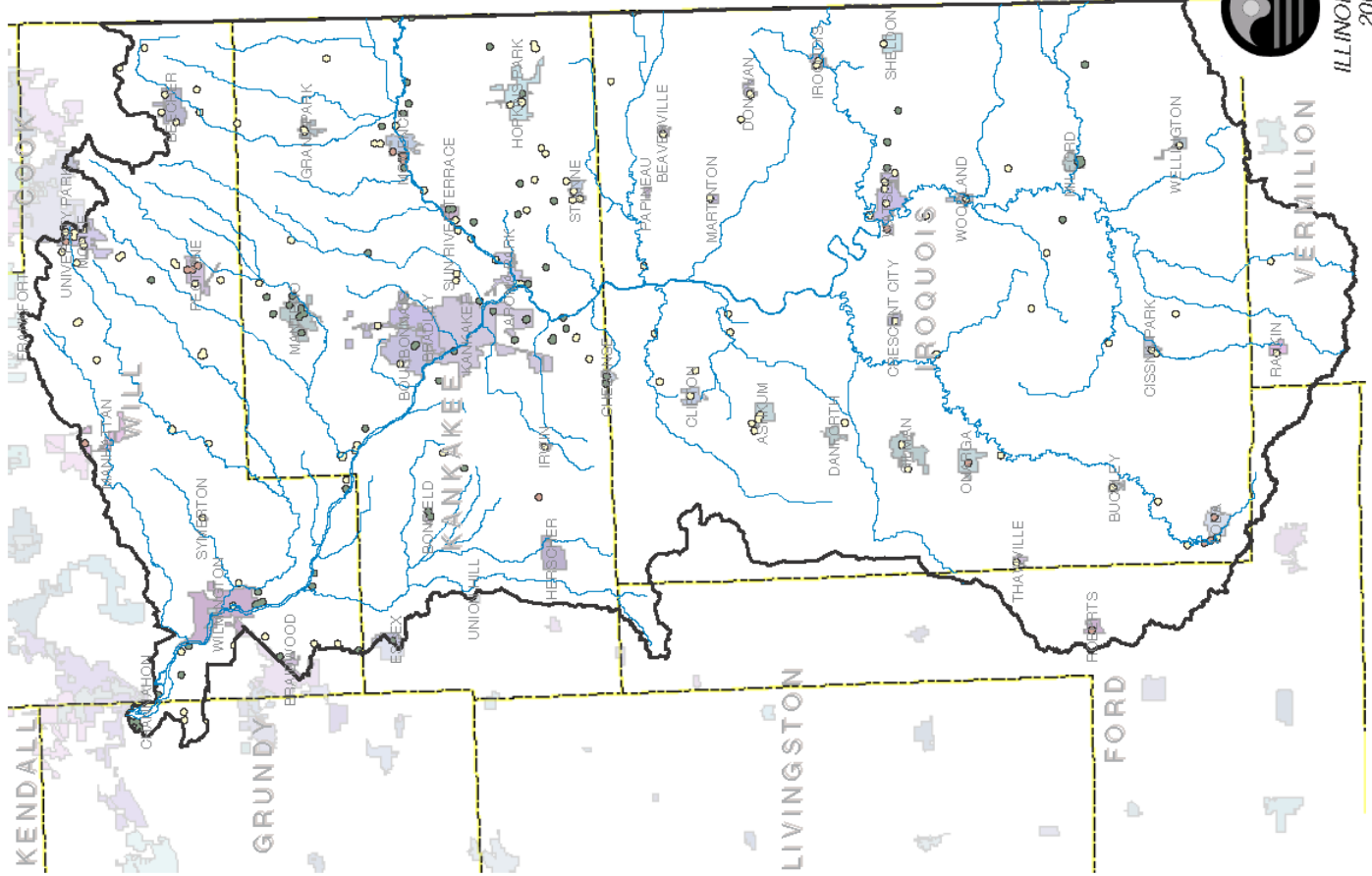
61% Limited Susceptibility: 9,080

32% Moderate Susceptibility: 4,742

7% High Susceptibility: 1,094

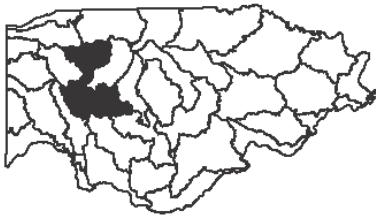
Legend

- | | |
|-----------------|--------------------|
| Groundwater SWA | Stream |
| Limited | Basin Boundary |
| Moderate | Municipal Boundary |
| High | County Boundary |



ILLINOIS EPA
2004

Groundwater Source Water Areas In The Upper Illinois/Mazon Basin



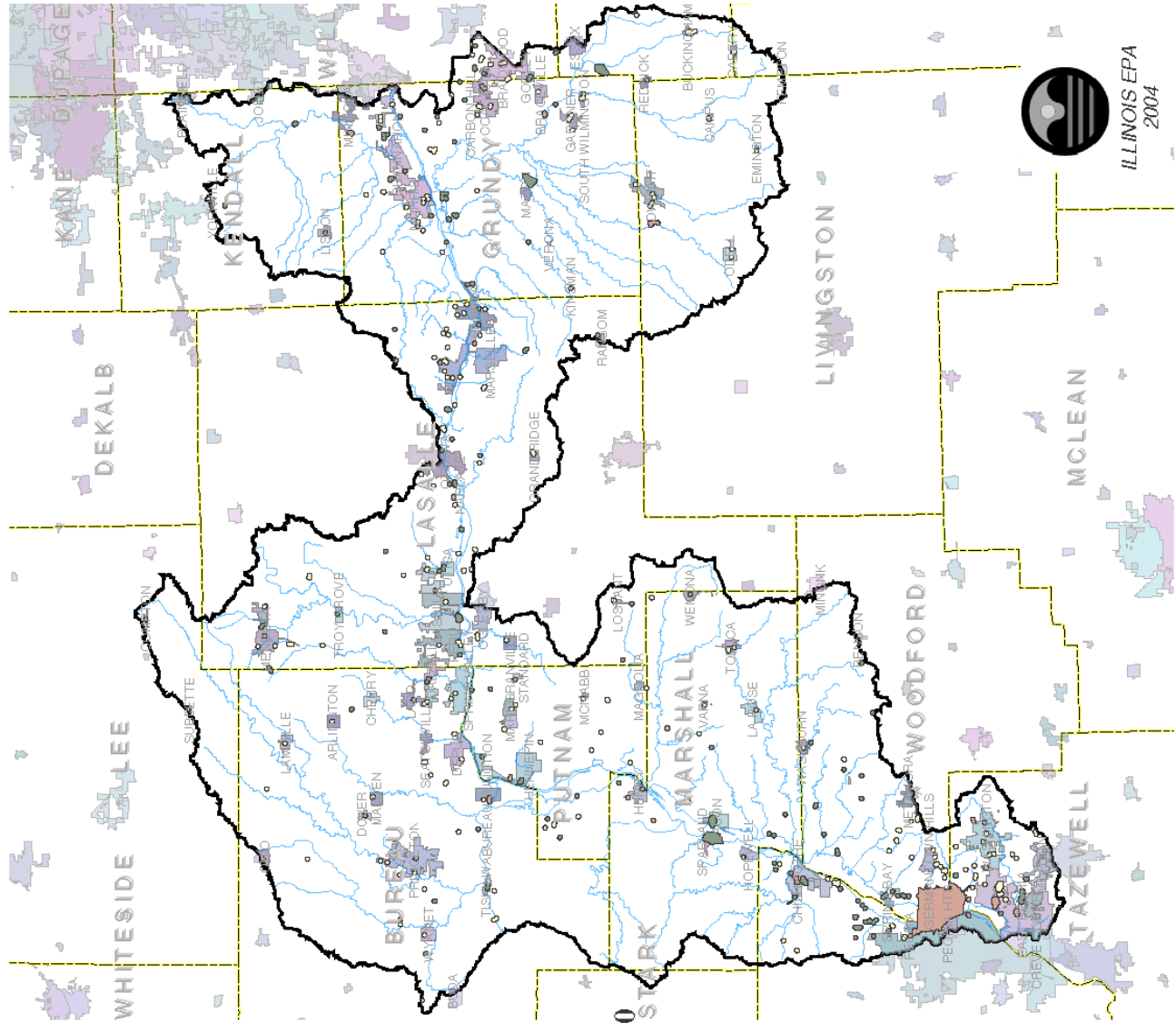
**Total Acres in the
Upper Illinois/Mazon Basin: 1,880,050**

2% Total Source Water Area Acres: 38,030

40% Limited Susceptibility: 15,133

32% Moderate Susceptibility: 12,172

28% High Susceptibility: 10,725



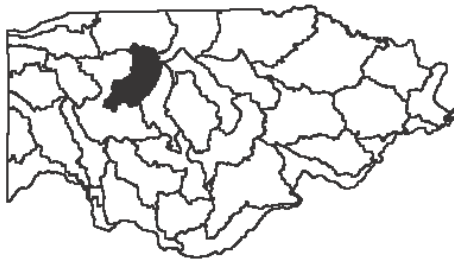
Legend

- Groundwater SWA
 - Limited
 - Moderate
 - High
- Stream
- Basin Boundary
- Municipal Boundary
- County Boundary



ILLINOIS EPA
2004

Groundwater Source Water Areas In The Vermilion (Illinois) Basin



Total Acres in the Vermilion (Illinois) Basin: 845,432

<1% Total Source Water Area Acres: 3,800

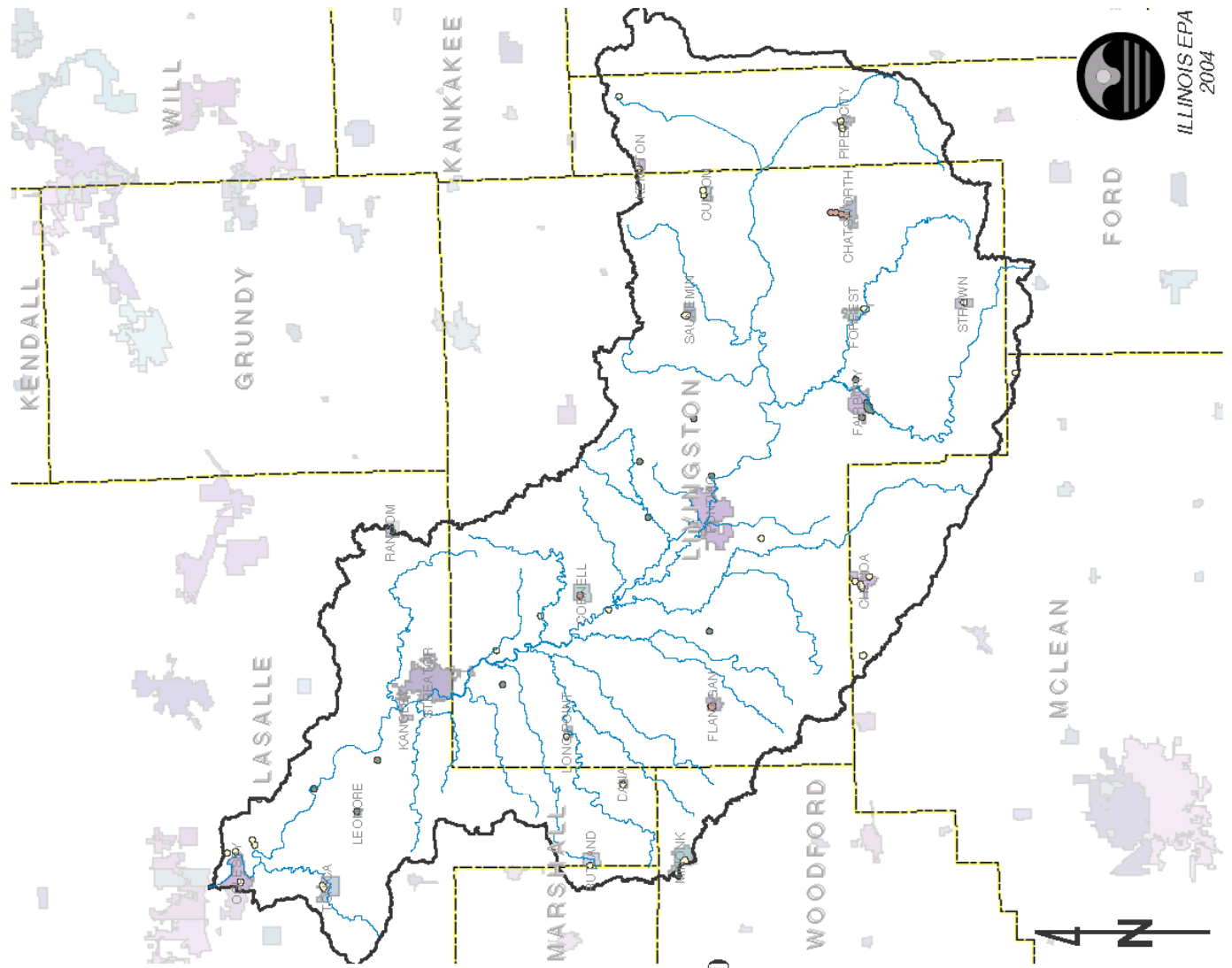
59% Limited Susceptibility: 2,257

28% Moderate Susceptibility: 1,074

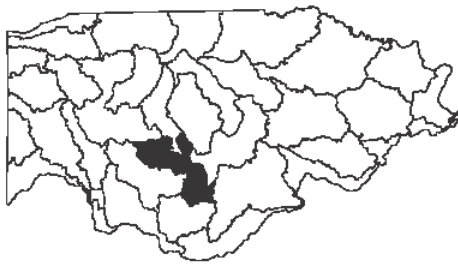
12% High Susceptibility: 469

Legend

Groundwater SWA	Stream
Limited	Basin Boundary
Moderate	Municipal Boundary
High	County Boundary



Groundwater Source Water Areas In The Middle Illinois Basin



Total Acres in the Middle Illinois Basin: 1,051,095

1% Total Source Water Area Acres: 11,539

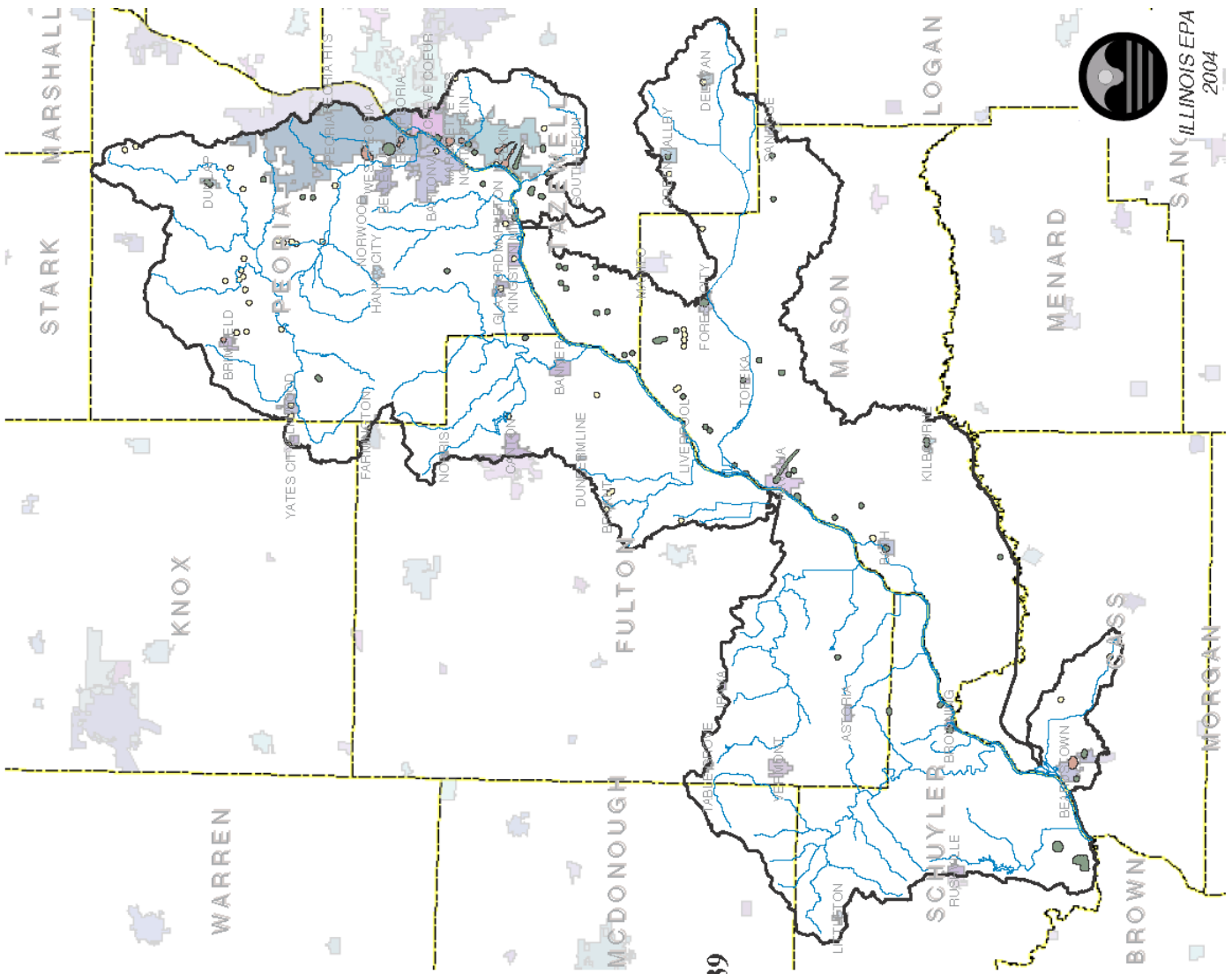
30% Limited Susceptibility: 3,468

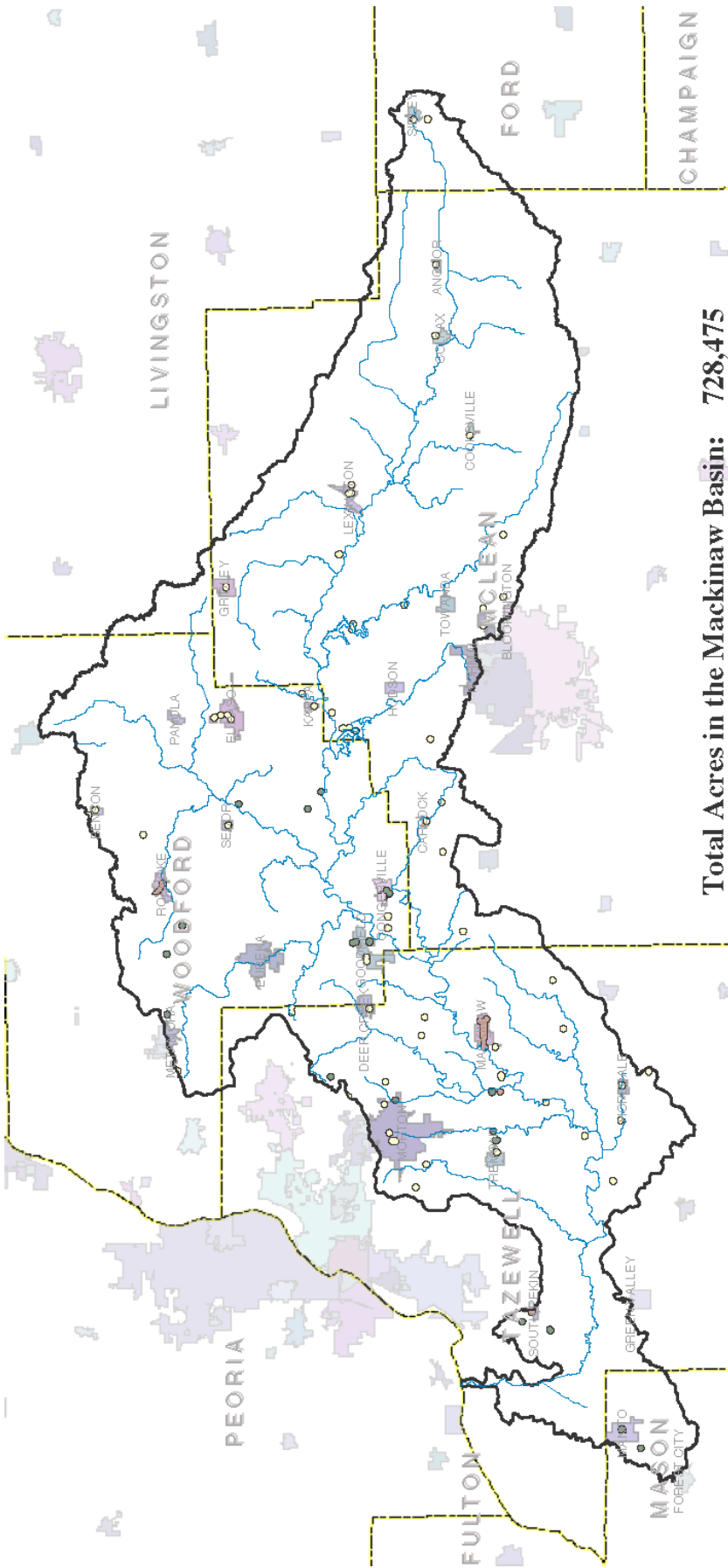
57% Moderate Susceptibility: 6,599

13% High Susceptibility: 1,472

Legend

- Groundwater SWA
 - Limited
 - Moderate
 - High
- Stream
- Basin Boundary
- Municipal Boundary
- County Boundary





Total Acres in the Mackinaw Basin: 728,475

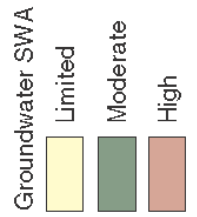
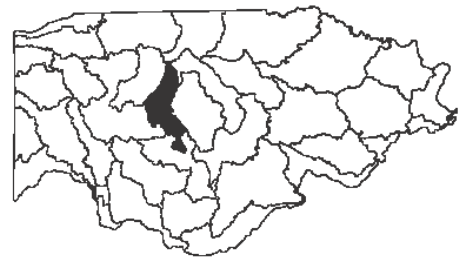
1% Total Source Water Area Acres: 6,976

67% Limited Susceptibility: 4,641

22% Moderate Susceptibility: 1,530

12% High Susceptibility: 805

**Groundwater Source Water Areas
In The Mackinaw Basin**

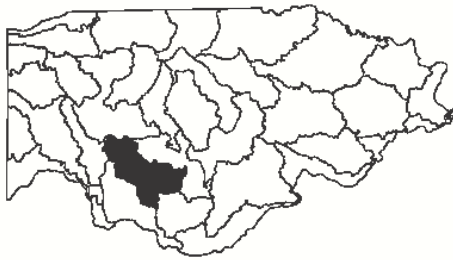


Legend



ILLINOIS EPA
2004

Groundwater Source Water Areas In The Spoon Basin



**Total Acres in the
Spoon Basin: 1,180,967**

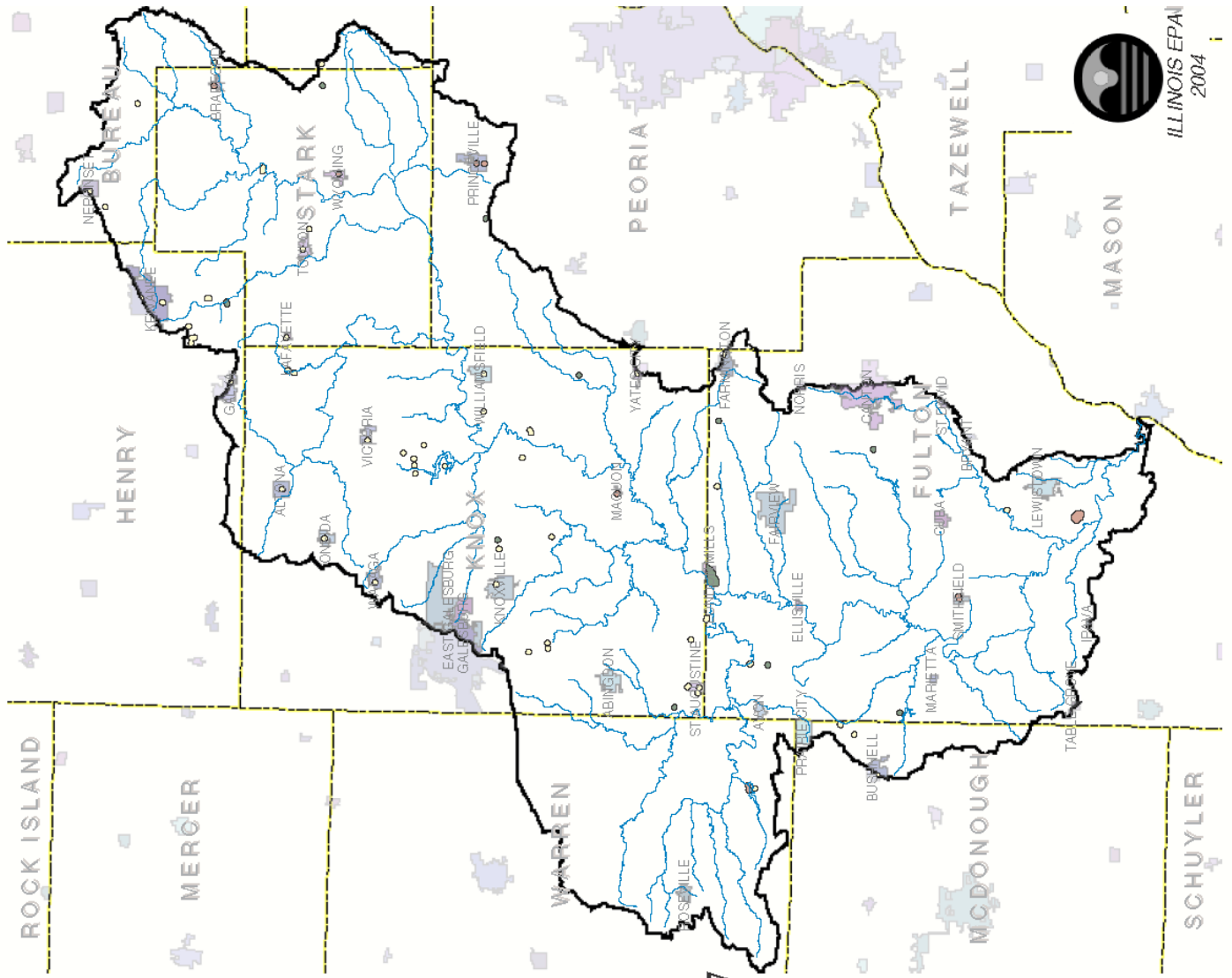
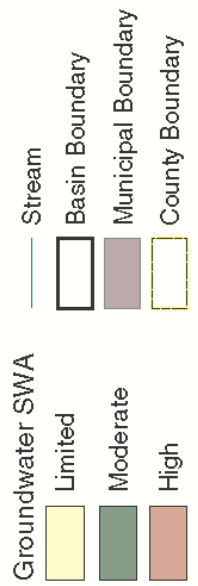
1% Total Source Water Area Acres: 6,107

64% Limited Susceptibility: 6,888

21% Moderate Susceptibility: 1,264

16% High Susceptibility: 955

Legend



Groundwater Source Water Areas In The Mississippi Central Basin



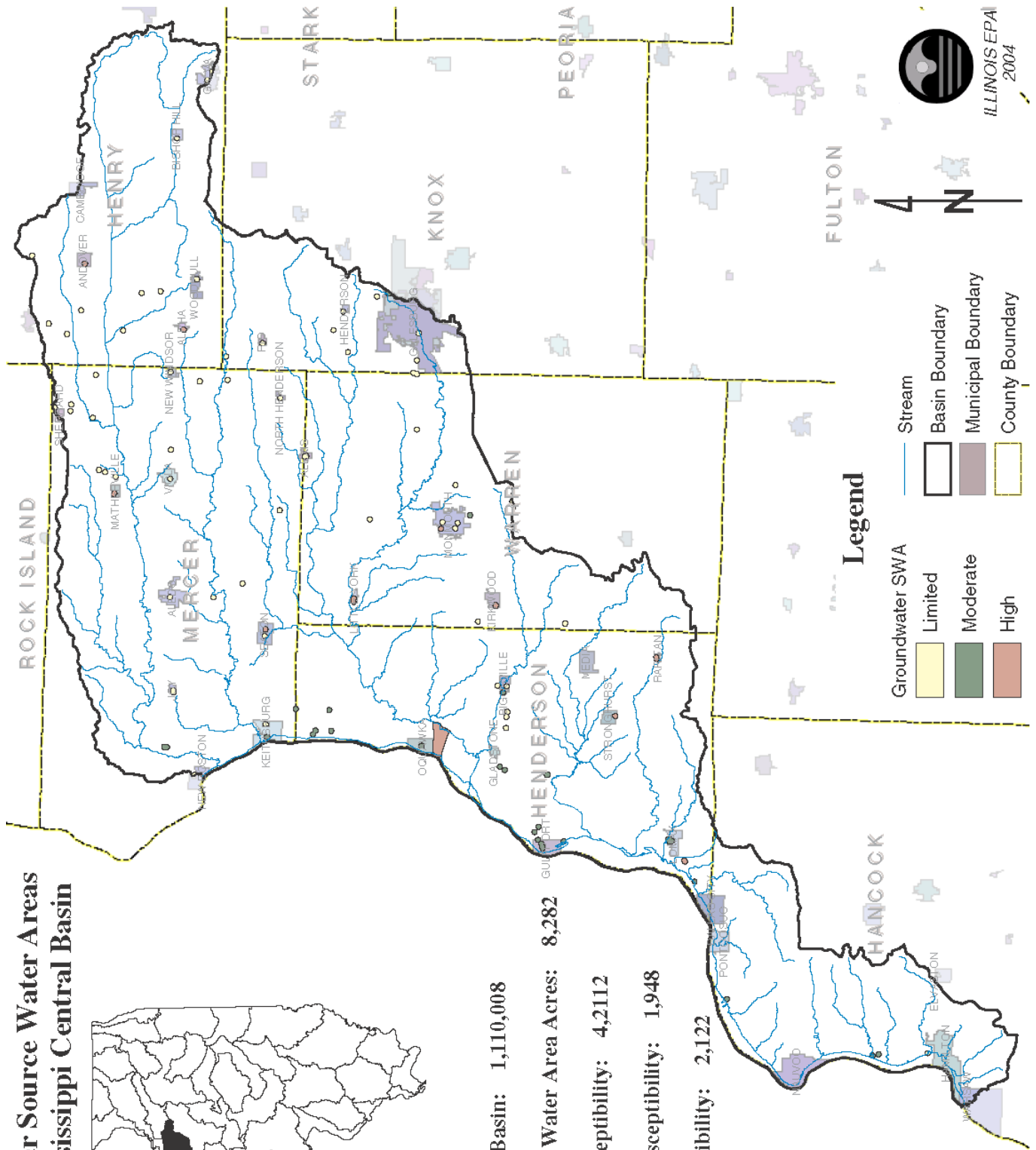
Total Acres in the Mississippi Central Basin: 1,110,008

1% Total Source Water Area: 8,282

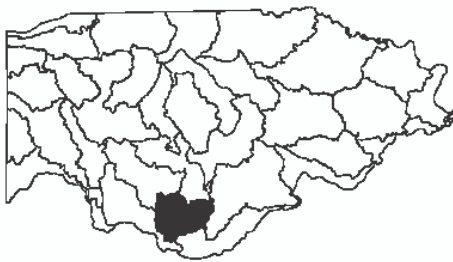
51% Limited Susceptibility: 4,2112

24% Moderate Susceptibility: 1,948

26% High Susceptibility: 2,122



Groundwater Source Water Areas In The La Moine Basin



Total Acres in the
La Moine Basin: 855,080

<1% Total Source Water Area Acres: 2,925

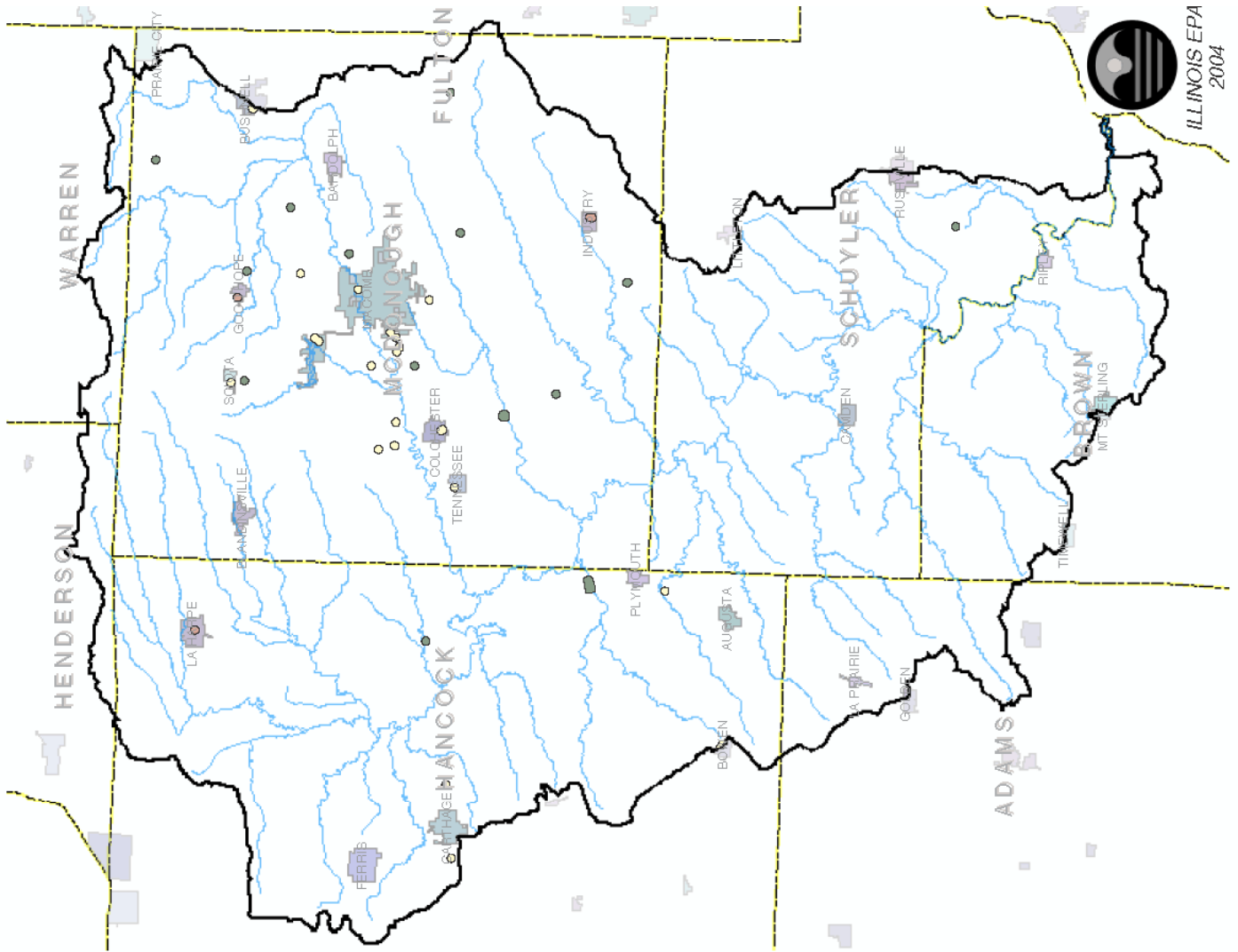
50% Limited Susceptibility: 1,471

41% Moderate Susceptibility: 1,207

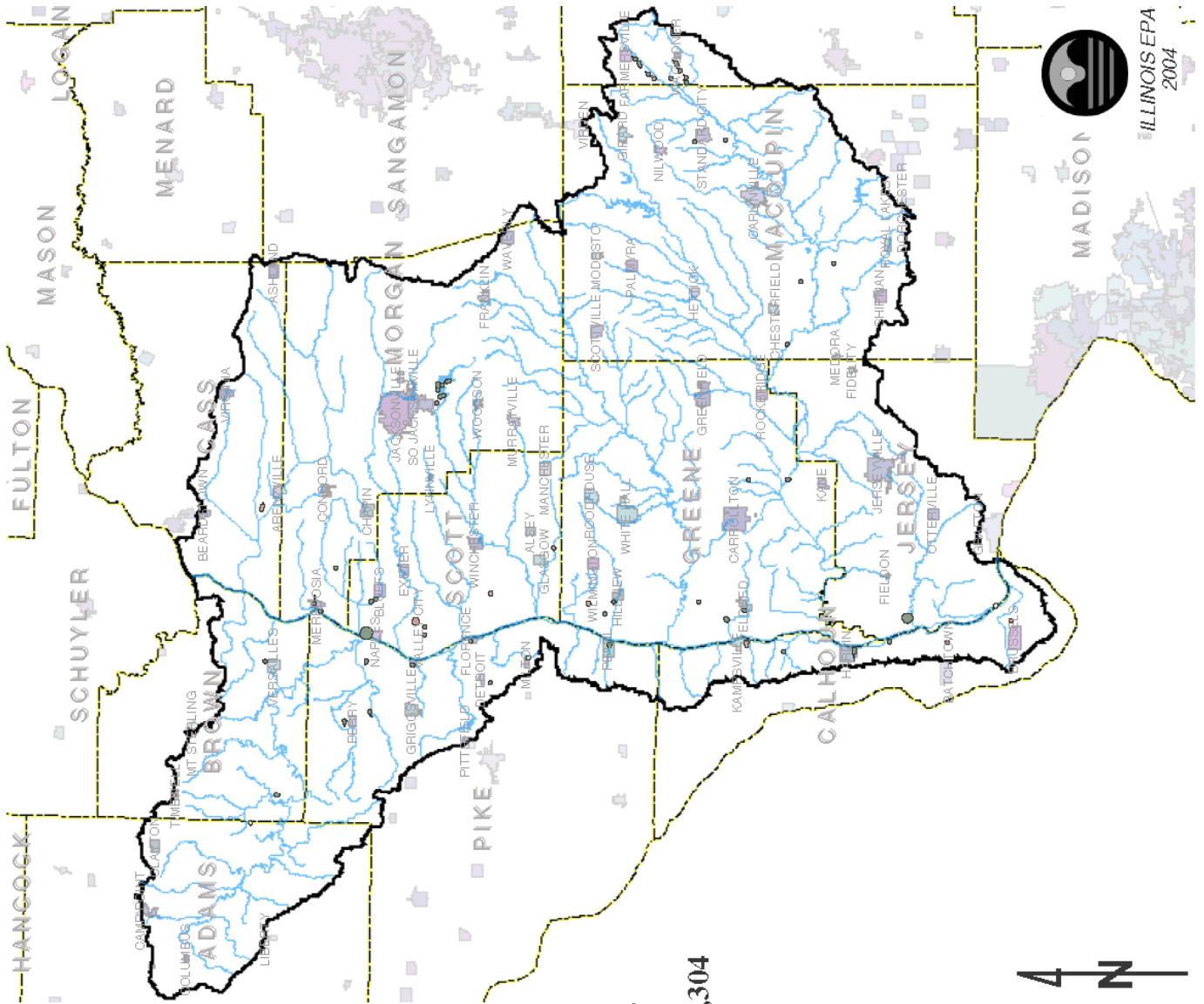
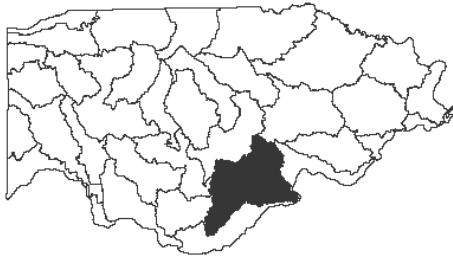
8% High Susceptibility: 246

Legend

Groundwater SWA	Stream	Basin Boundary
Limited		Municipal Boundary
Moderate		County Boundary
High		



Groundwater Source Water Areas In The Lower Illinois Macoupin Basin



Total Acres in the Lower Illinois Macoupin Basin: 2,058,944

<1% Total Source Water Area Acres: 6,304

4% Limited Susceptibility: 241

79% Moderate Susceptibility: 4,992

17% High Susceptibility: 1,071

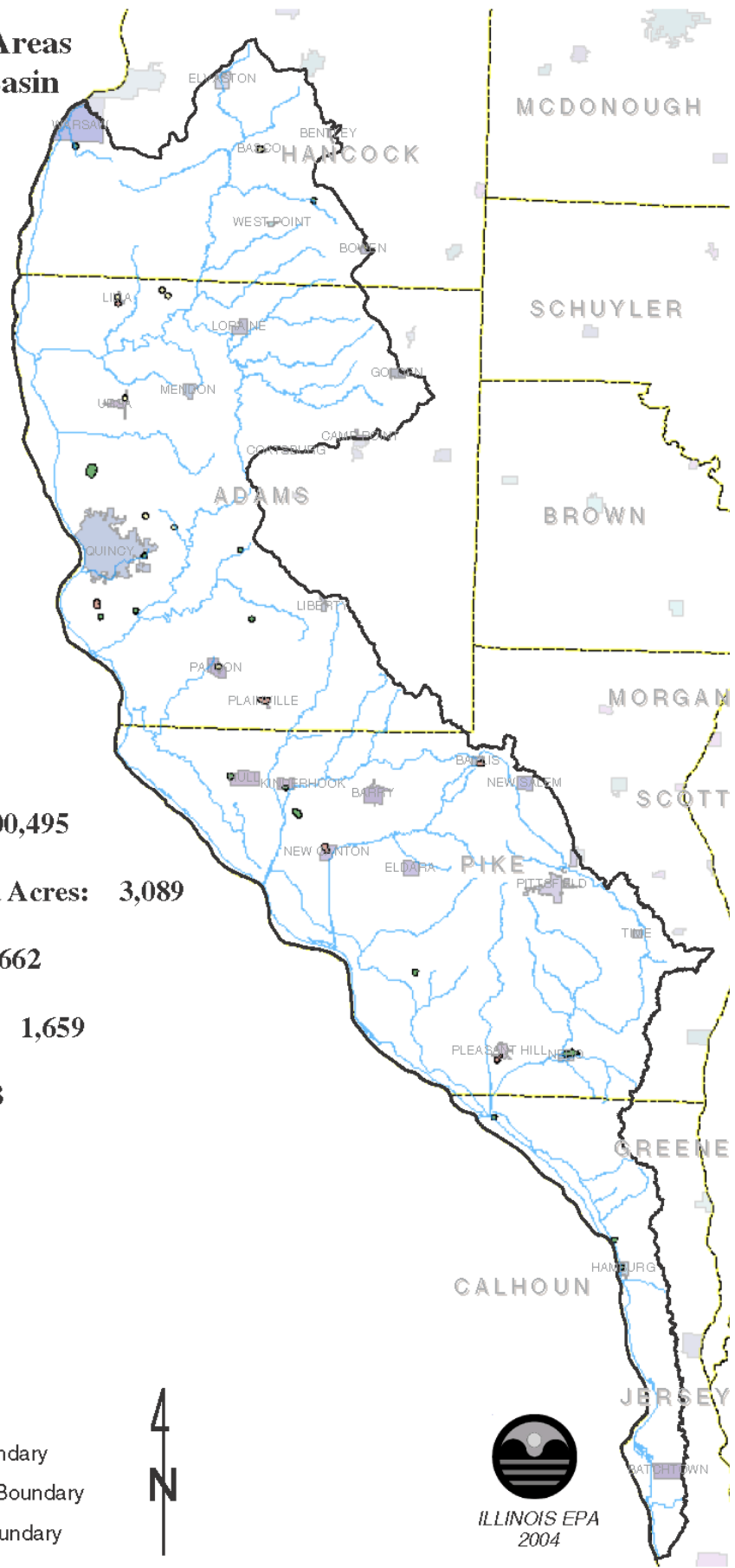
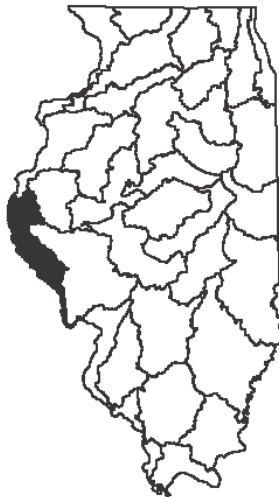
Legend

- Groundwater SWA
 - Limited
 - Moderate
 - High
- Stream
- Basin Boundary
- Municipal Boundary
- County Boundary



ILLINOIS EPA
2004

Groundwater Source Water Areas In The Mississippi Central Basin



**Total Acres in the
Mississippi Central Basin: 1,000,495**

<1% Total Source Water Area Acres: 3,089

21% Limited Susceptibility: 662

54% Moderate Susceptibility: 1,659

25% High Susceptibility: 768

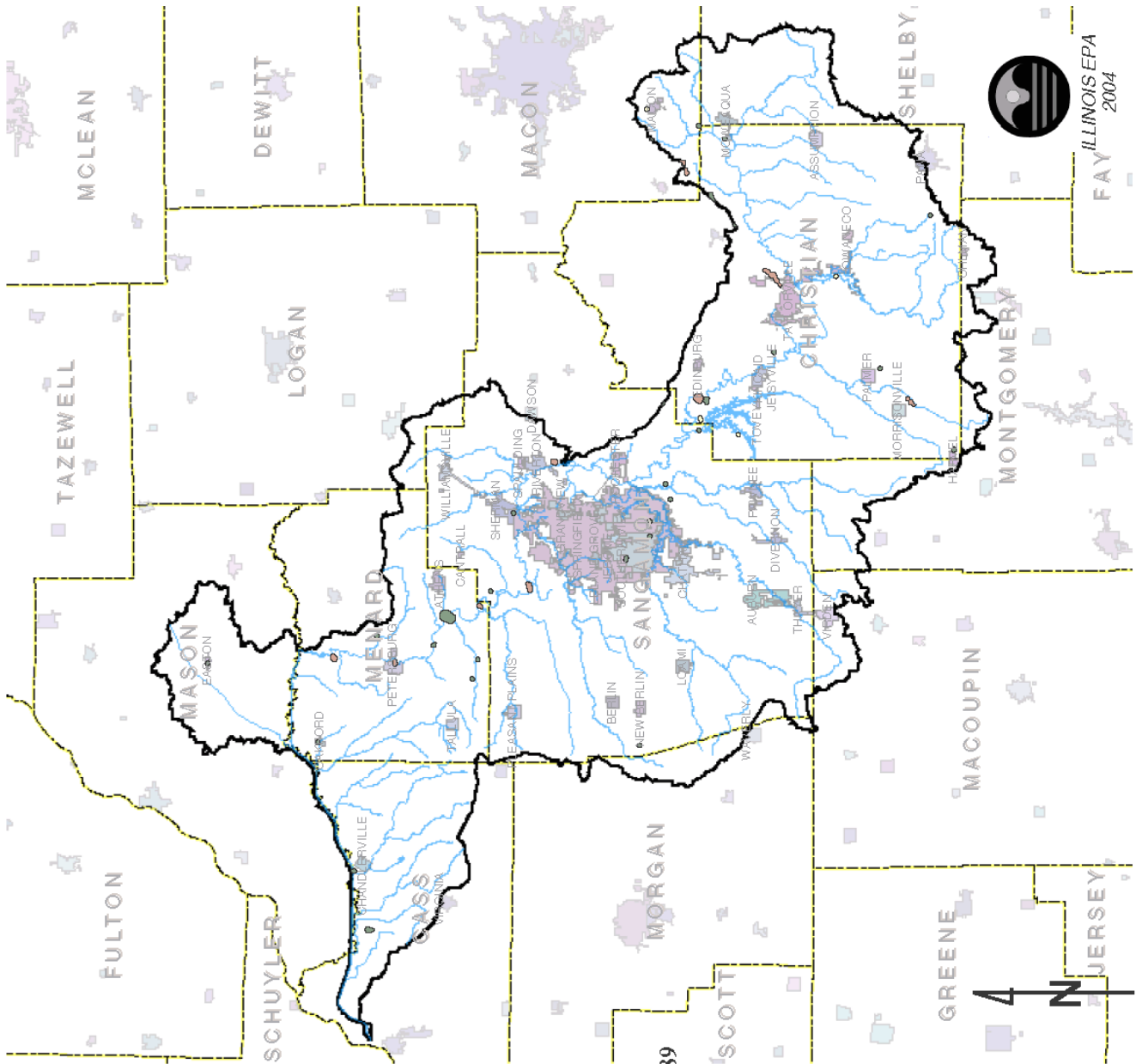
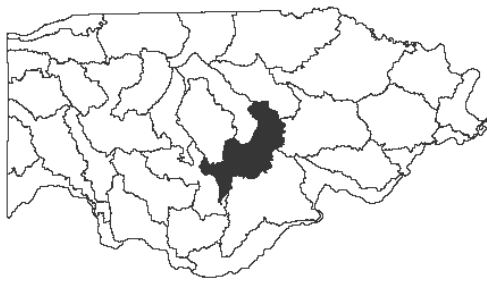
Legend

- | | |
|-----------------|--------------------|
| Groundwater SWA | — Stream |
| Limited | Basin Boundary |
| Moderate | Municipal Boundary |
| High | County Boundary |



ILLINOIS EPA
2004

Groundwater Source Water Areas In The Lower Sangamon Basin



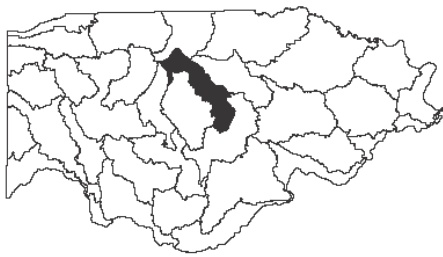
Total Acres in the Lower Sangamon Basin: 1,000,495
<1% Total Source Water Area Acres: 3,089
21% Limited Susceptibility: 662
54% Moderate Susceptibility: 1,659
25% High Susceptibility: 768

Legend

- Groundwater SWA
 - Limited
 - Moderate
 - High
- Stream
- Basin Boundary
- Municipal Boundary
- County Boundary



Groundwater Source Water Areas In The Upper Sangamon Basin



**Total Acres in the
Upper Sangamon Basin: 912,662**

1% Total Source Water Area Acres: 7,217

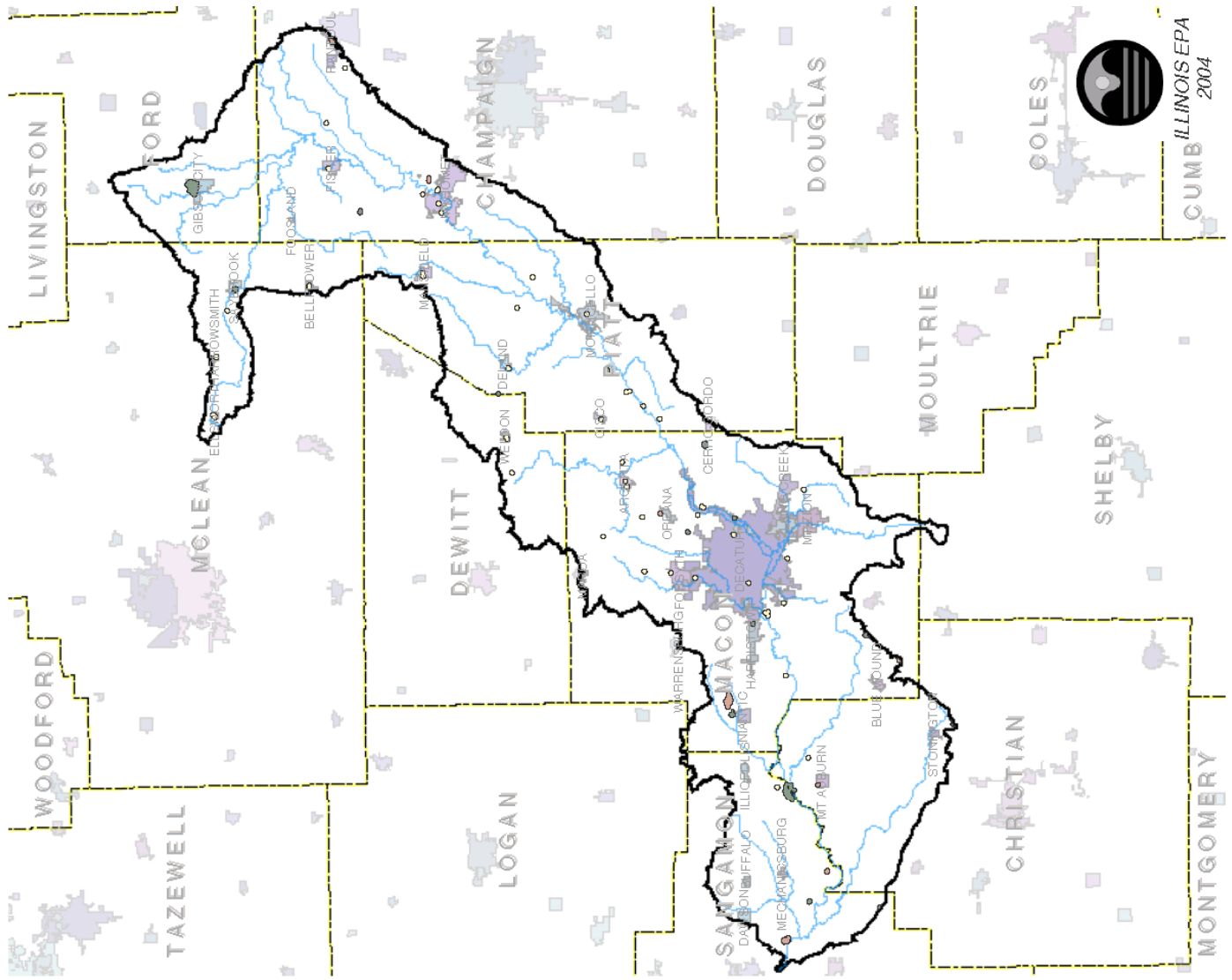
49% Limited Susceptibility: 3,550

34% Moderate Susceptibility: 2,485

16% High Susceptibility: 1,182

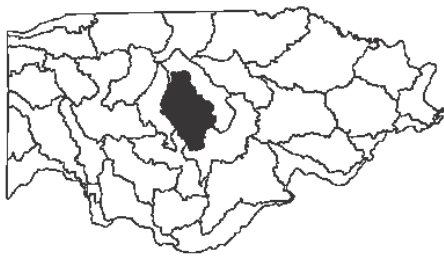
Legend

Groundwater SWA	Stream
Limited	Basin Boundary
Moderate	Municipal Boundary
High	County Boundary



CUMBERLAND ILLINOIS EPA
2004

Groundwater Source Water Areas In The Salt Creek of Sangamon Basin



**Total Acres in the
The Salt Creek of Sangamon Basin: 1,182,422**

1% Total Source Water Area Acres: 10,700

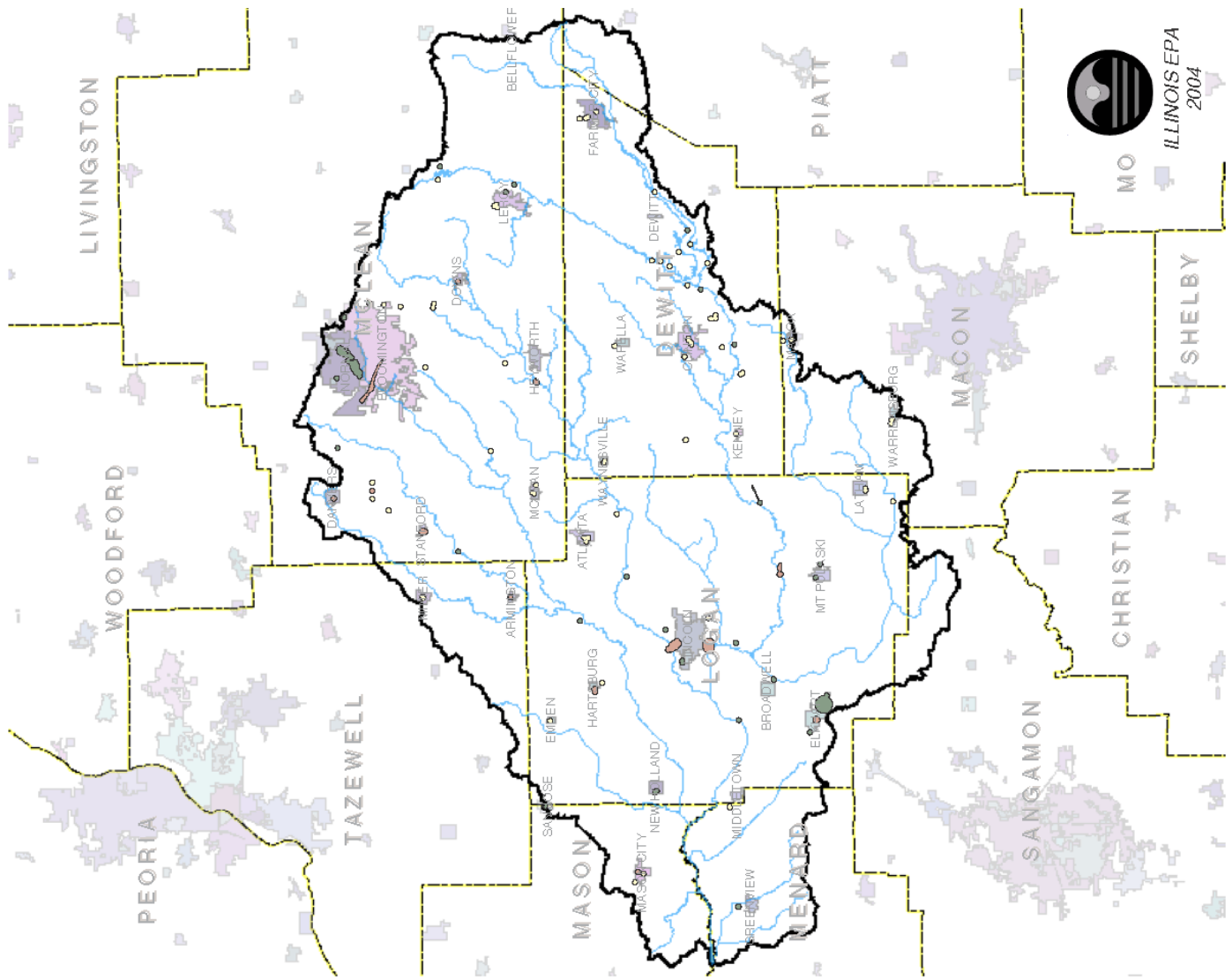
40% Limited Susceptibility: 4,262

37% Moderate Susceptibility: 3,911

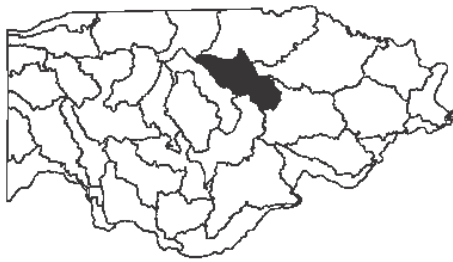
24% High Susceptibility: 2,526

Legend

- Groundwater SWA
 - Limited
 - Moderate
 - High
- Stream
- Basin Boundary
- Municipal Boundary
- County Boundary



Groundwater Source Water Areas In The Upper Kaskaskia Basin



**Total Acres in the
Upper Kaskaskia Basin: 992,822**

1% Total Source Water Area Acres: 5,271

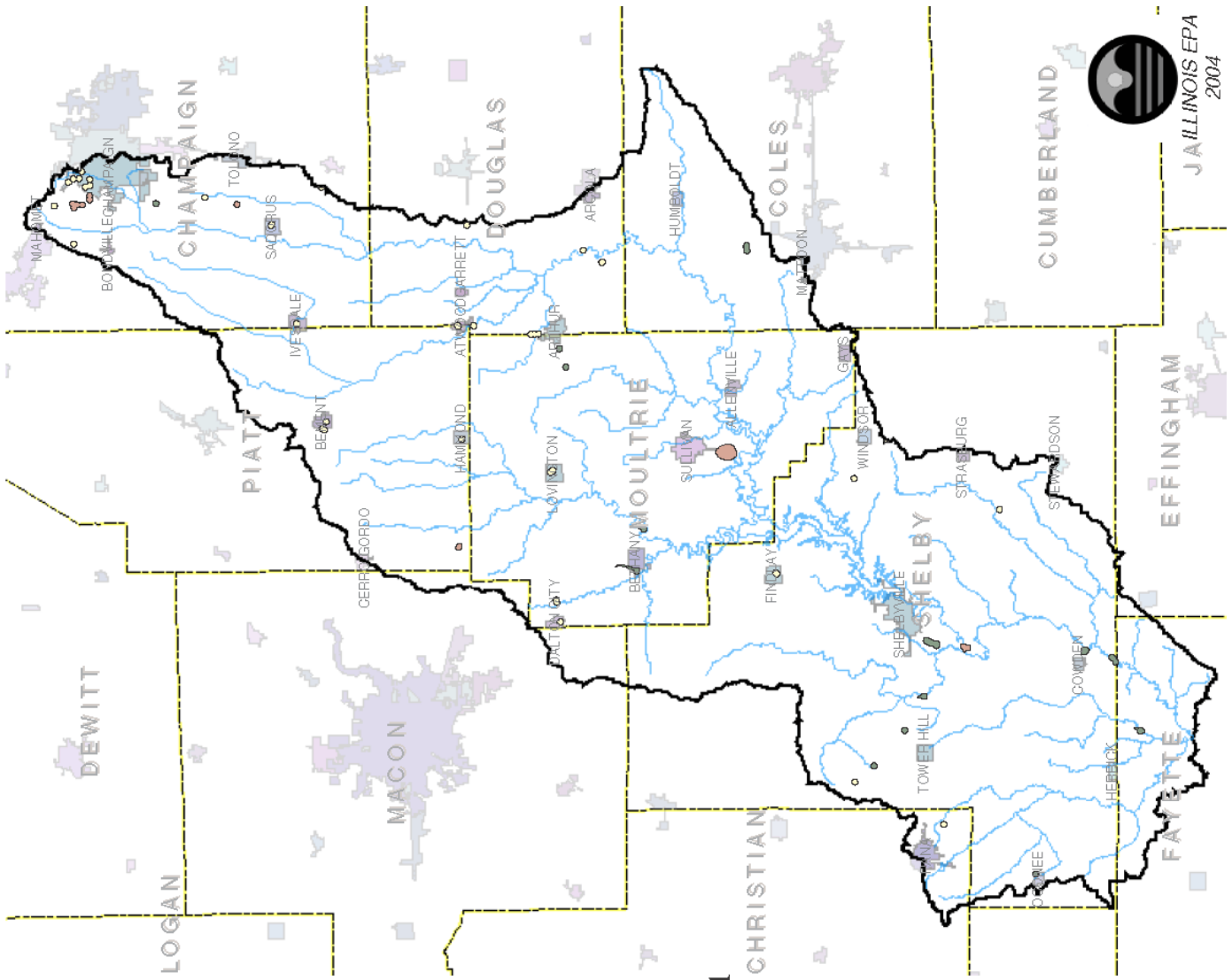
46% Limited Susceptibility: 2,433

30% Moderate Susceptibility: 1,569

24% High Susceptibility: 1,269

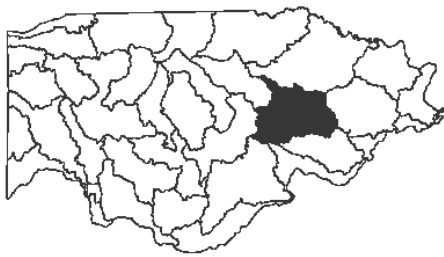
Legend

- Groundwater SWA
 - Limited
 - Moderate
 - High
- Stream
- Basin Boundary
- Municipal Boundary
- County Boundary



ILLINOIS EPA
2004

Groundwater Source Water Areas In The Middle Kaskaskia Shoal Basin



**Total Acres in the
The Middle Kaskaskia Shoal Basin: 992,822**

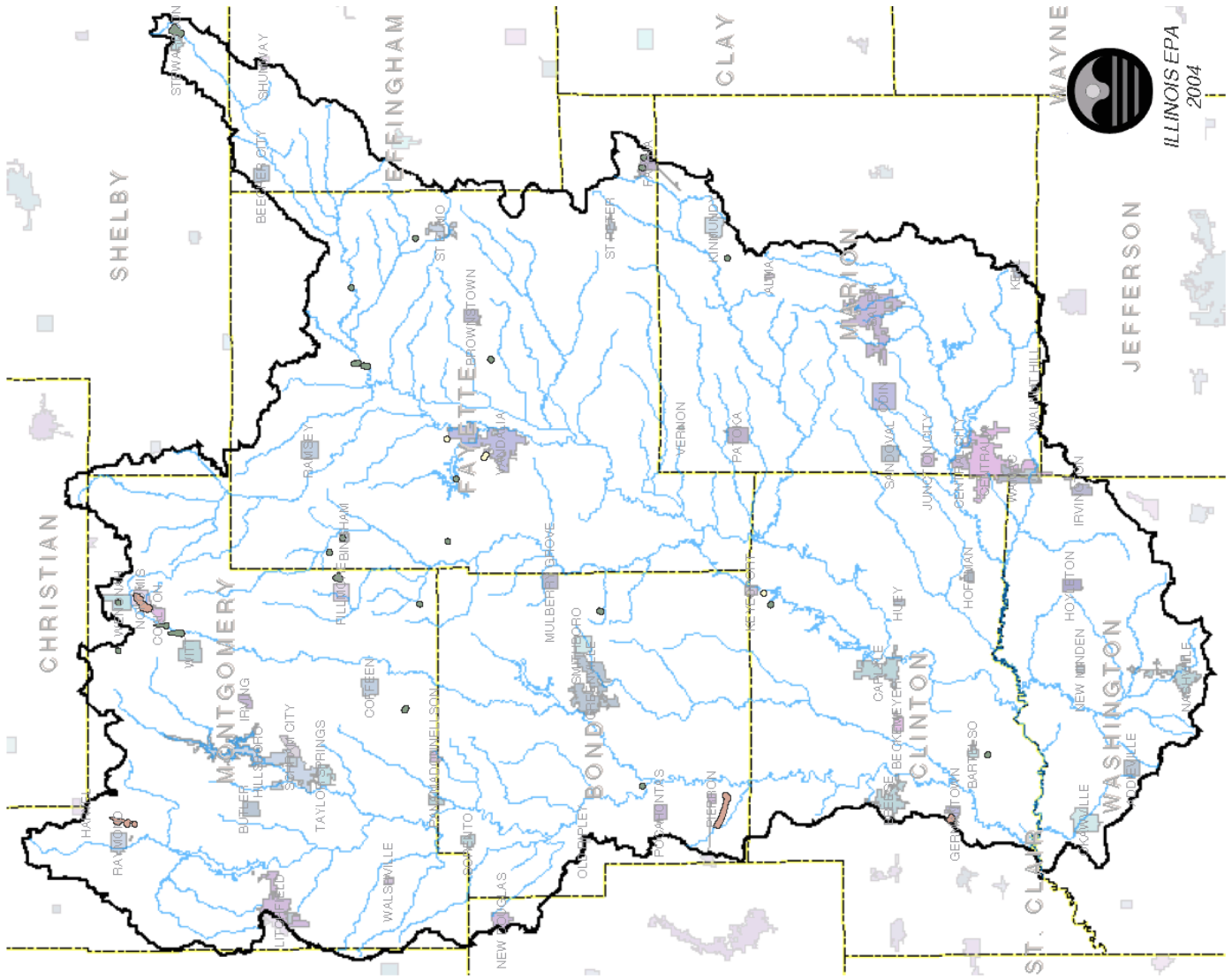
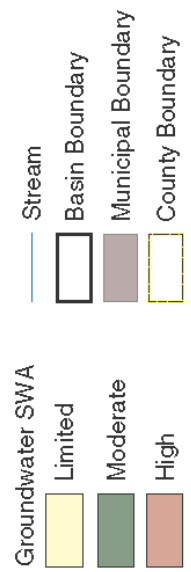
<1% Total Source Water Area Acres: 4,278

6% Limited Susceptibility: 265

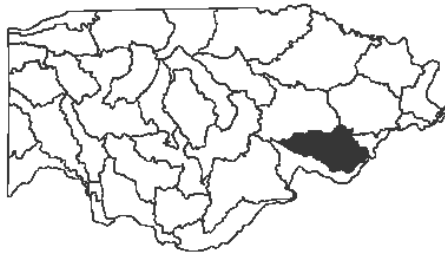
58% Moderate Susceptibility: 2,480

36% High Susceptibility: 1,1533

Legend



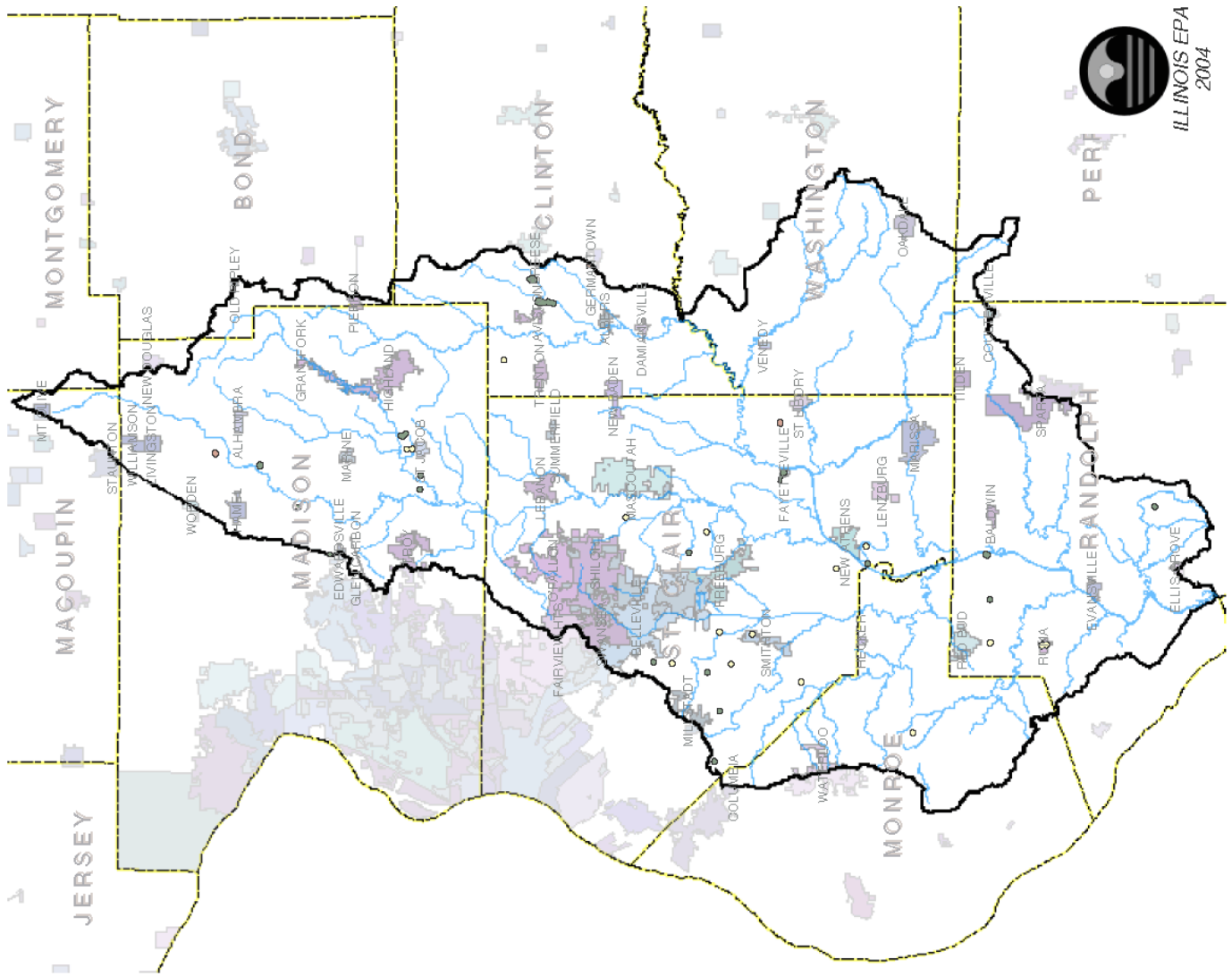
Groundwater Source Water Areas In The Lower Kaskaskia Basin



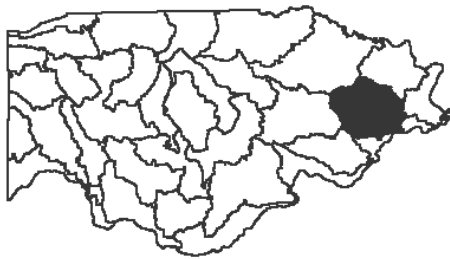
Total Acres in the Lower Kaskaskia Basin: 1,016,985
<1% Total Source Water Area Acres: 3,214
37% Limited Susceptibility: 1,182
57% Moderate Susceptibility: 1,819
7% High Susceptibility: 214

Legend

- | | |
|-----------------|--------------------|
| Groundwater SWA | Stream |
| Limited | Basin Boundary |
| Moderate | Municipal Boundary |
| High | County Boundary |



Groundwater Source Water Areas In The Big Muddy Basin



**Total Acres in the
Big Muddy Basin: 1,510,655**

<1% Total Source Water Area Acres: 886

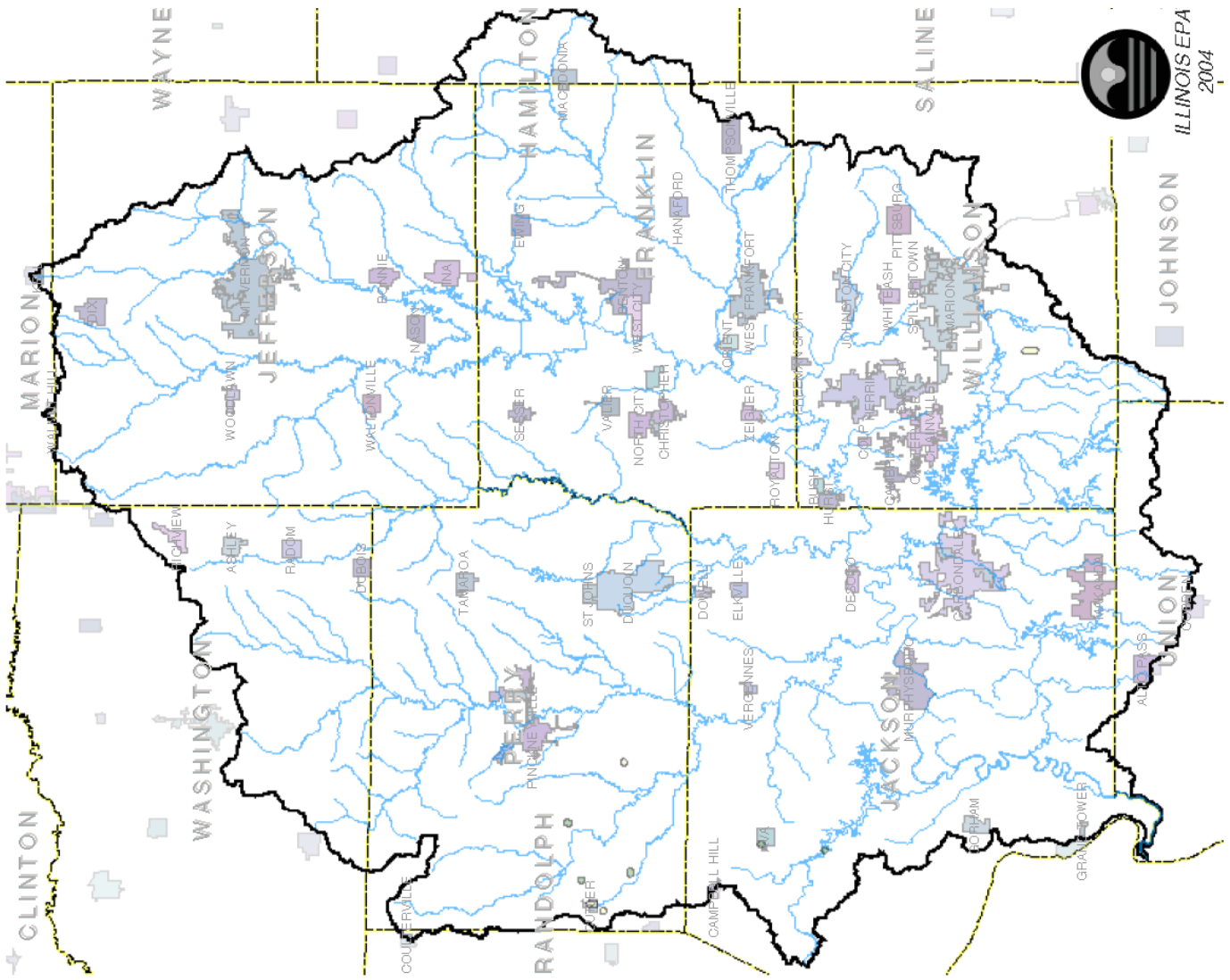
54% Limited Susceptibility: 479

46% Moderate Susceptibility: 407

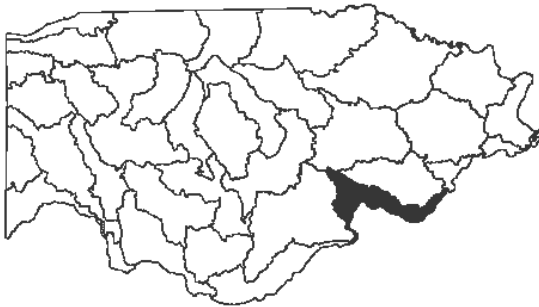
0% High Susceptibility: 0

Legend

- Groundwater SWA
 - Limited
 - Moderate
 - High
- Stream
- Basin Boundary
- Municipal Boundary
- County Boundary



Groundwater Source Water Areas In The Mississippi South Central Basin



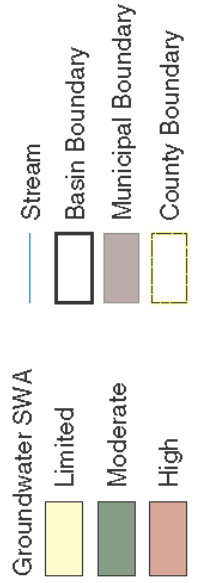
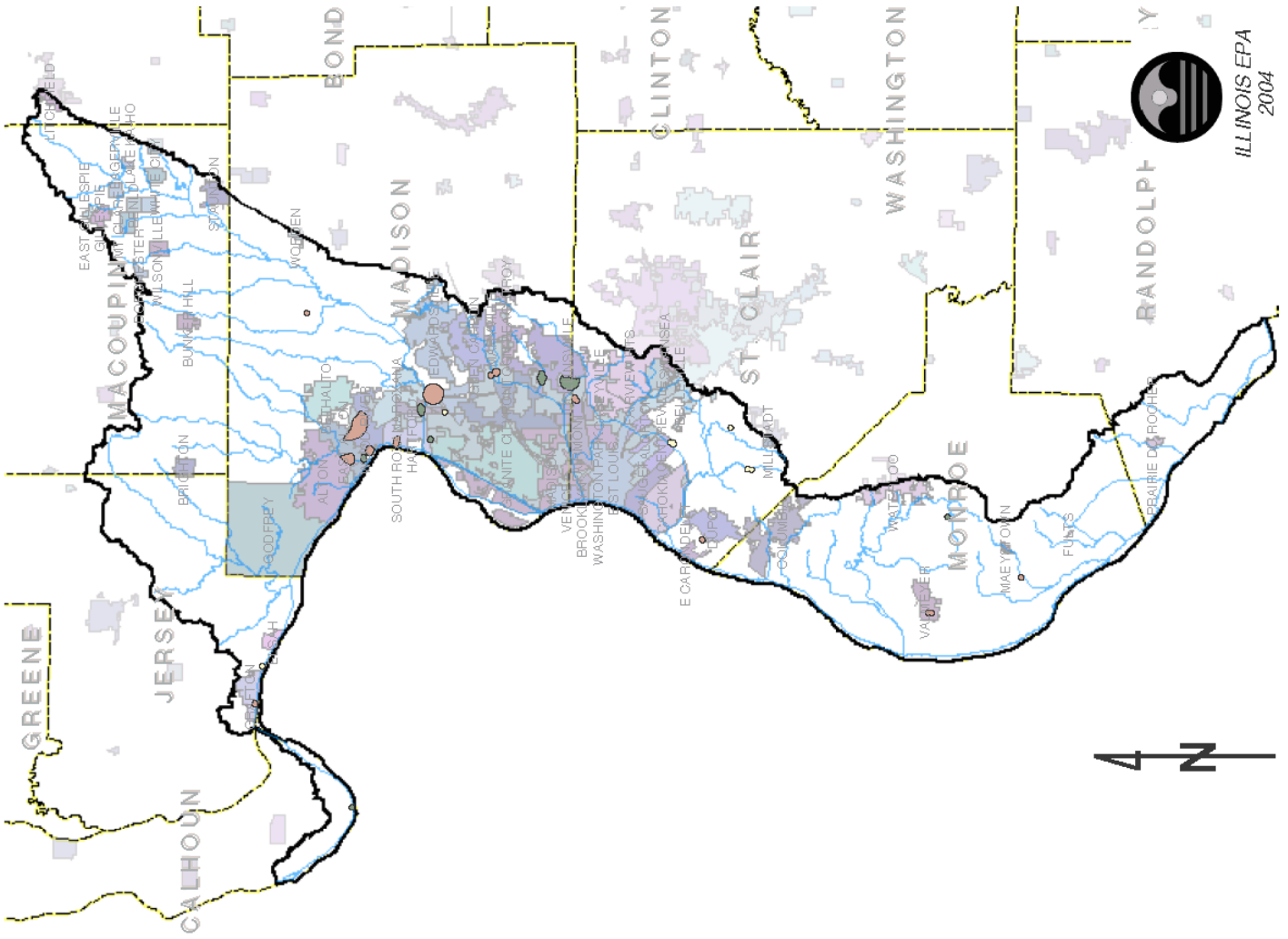
**Total Acres in the
The Mississippi South Central Basin: 746,111**

1% Total Source Water Area Acres: 5,603

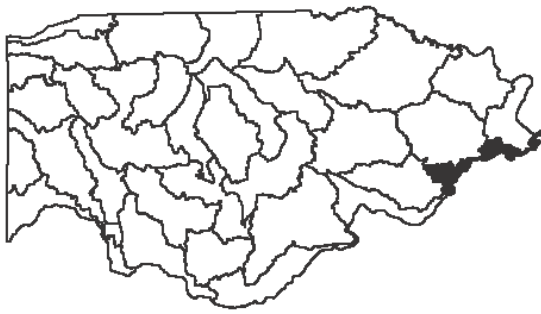
9% Limited Susceptibility: 489

26% Moderate Susceptibility: 1,455

65% High Susceptibility: 3,659



Groundwater Source Water Areas In The Mississippi South Basin



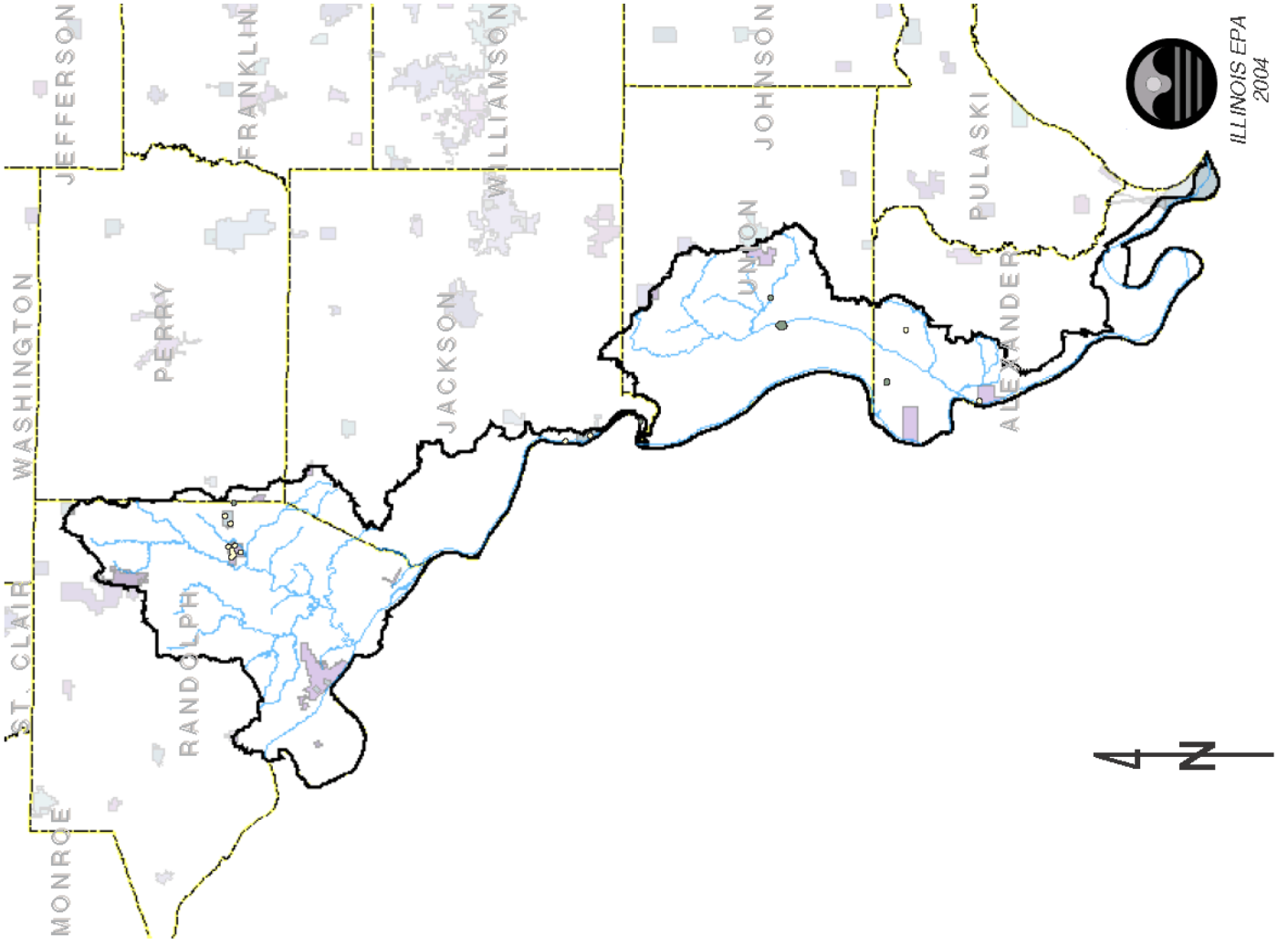
**Total Acres in the
The Mississippi South Basin: 463,562**

<1% Total Source Water Area Acres: 1,455

61% Limited Susceptibility: 888

39% Moderate Susceptibility: 567

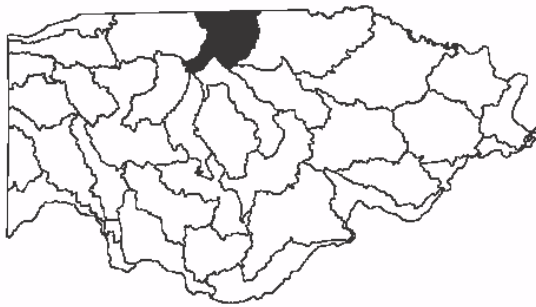
0% High Susceptibility: 0



Legend

- Groundwater SWA
 - Limited
 - Moderate
 - High
- Stream
- Basin Boundary
- Municipal Boundary
- County Boundary

Groundwater Source Water Areas In The Vermilion (Wabash) Basin



**Total Acres in the
The Vermilion (Wabash) Basin: 952,964**

1% Total Source Water Area Acres: 5,741

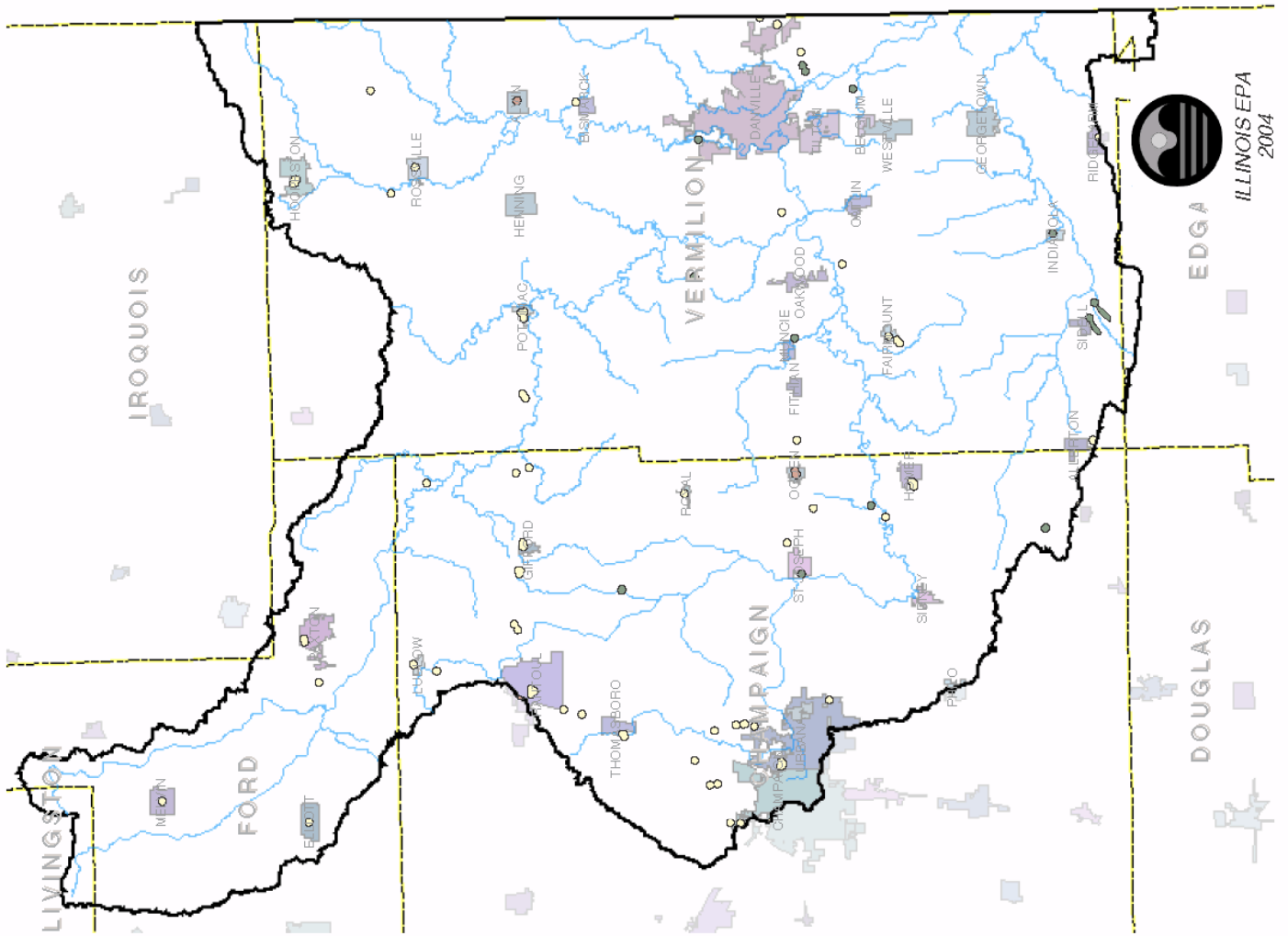
75% Limited Susceptibility: 4,319

21% Moderate Susceptibility: 1,195

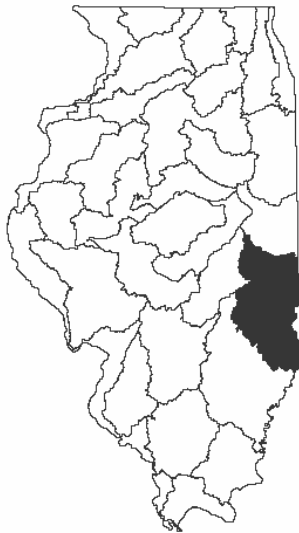
4% High Susceptibility: 227

Legend

- | | |
|-----------------|--------------------|
| Groundwater SWA | Stream |
| Limited | Basin Boundary |
| Moderate | Municipal Boundary |
| High | County Boundary |



Groundwater Source Water Areas In The Embarras Middle Wabash Basin



**Total Acres in the
The Embarras Middle Wabash Basin: 2,113,940**

1% Total Source Water Area Acres: 9,826

22% Limited Susceptibility: 2,184

51% Moderate Susceptibility: 5,039

26% High Susceptibility: 2,603

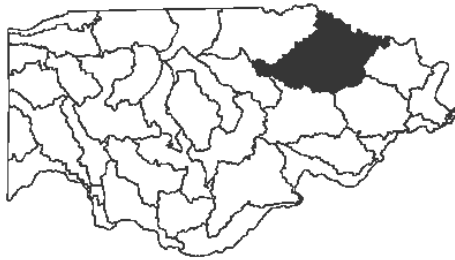
Legend

- | | |
|-----------------|--------------------|
| Groundwater SWA | — Stream |
| Limited | Basin Boundary |
| Moderate | Municipal Boundary |
| High | County Boundary |



ILLINOIS EPA
2004

Groundwater Source Water Areas In The Little And Lower Wabash/Skillet Fork Basin



Total Acres in the Little and Lower Wabash/Skillet Fork Basin: 2,436,458

<1% Total Source Water Area Acres: 7,032

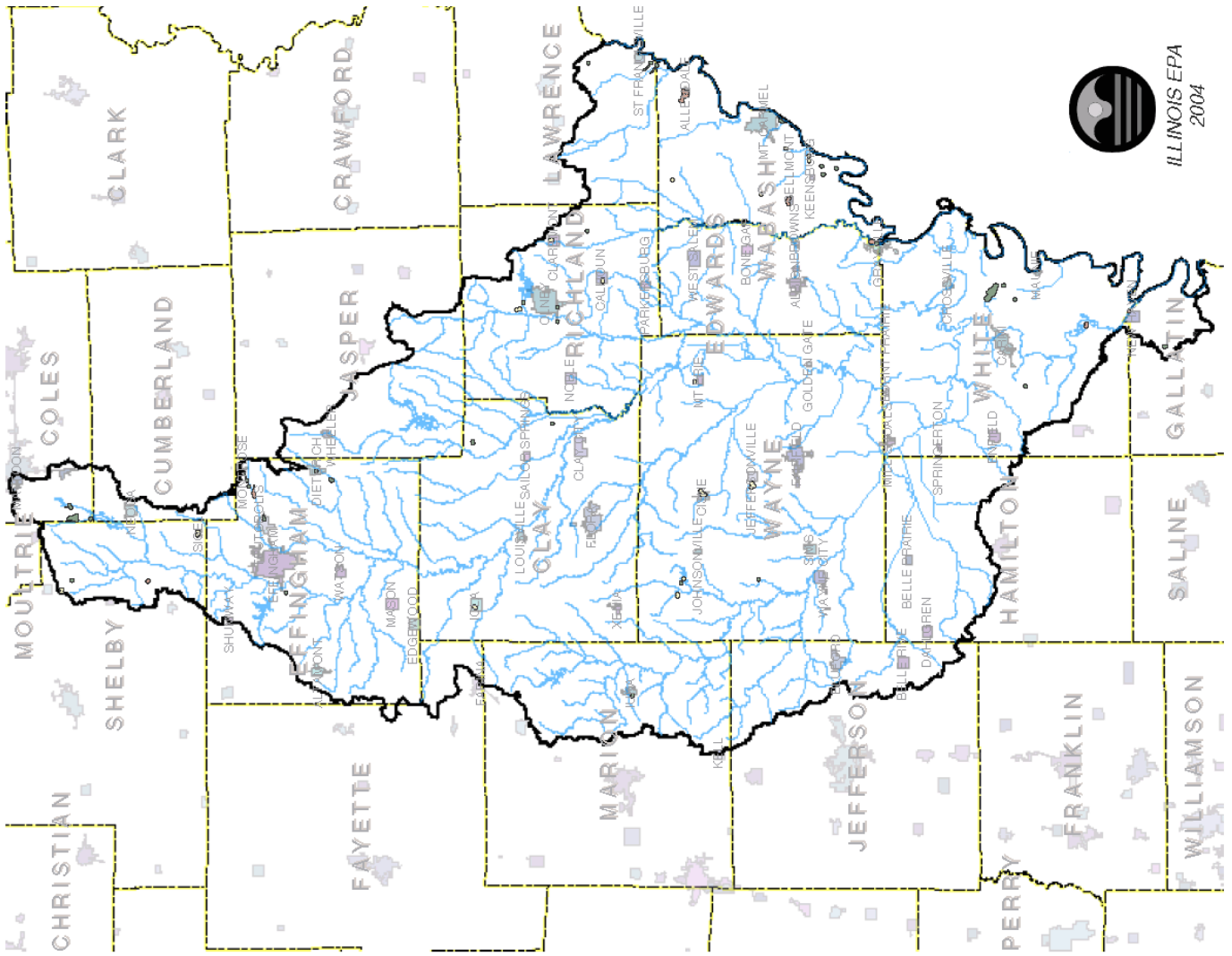
26% Limited Susceptibility: 1,824

56% Moderate Susceptibility: 3,907

18% High Susceptibility: 1,300

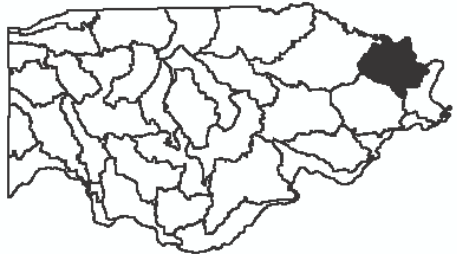
Legend

- Groundwater SWA
- Limited
- Moderate
- High
- Stream
- Basin Boundary
- Municipal Boundary
- County Boundary



ILLINOIS EPA
2004

Groundwater Source Water Areas In The Saline River Bay Creek Basin



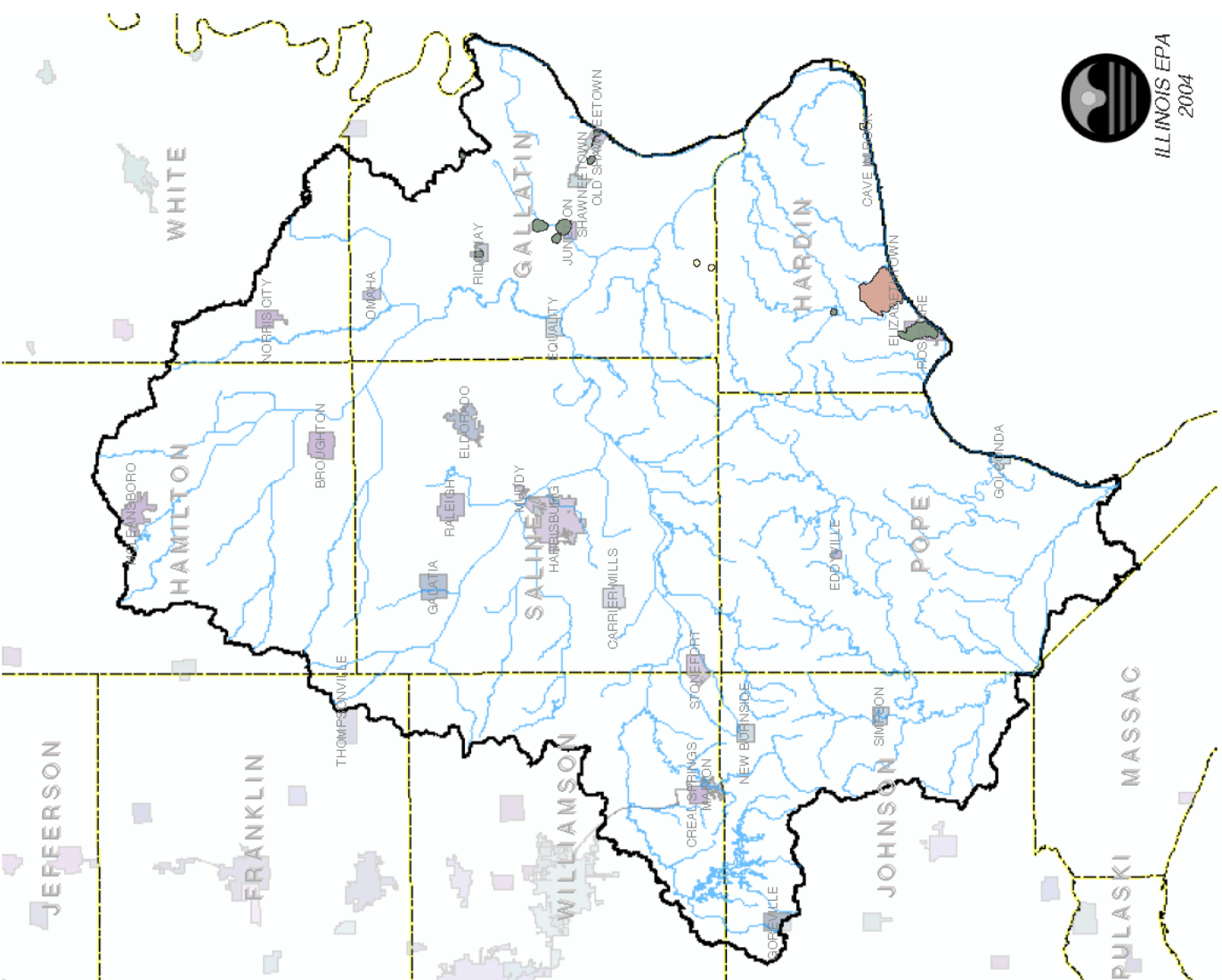
Total Acres in the Saline River Bay Creek Basin: 1,110,634

1% Total Source Water Area Acres: 5,163

4% Limited Susceptibility: 209

44% Moderate Susceptibility: 2,296

51% High Susceptibility: 2,658

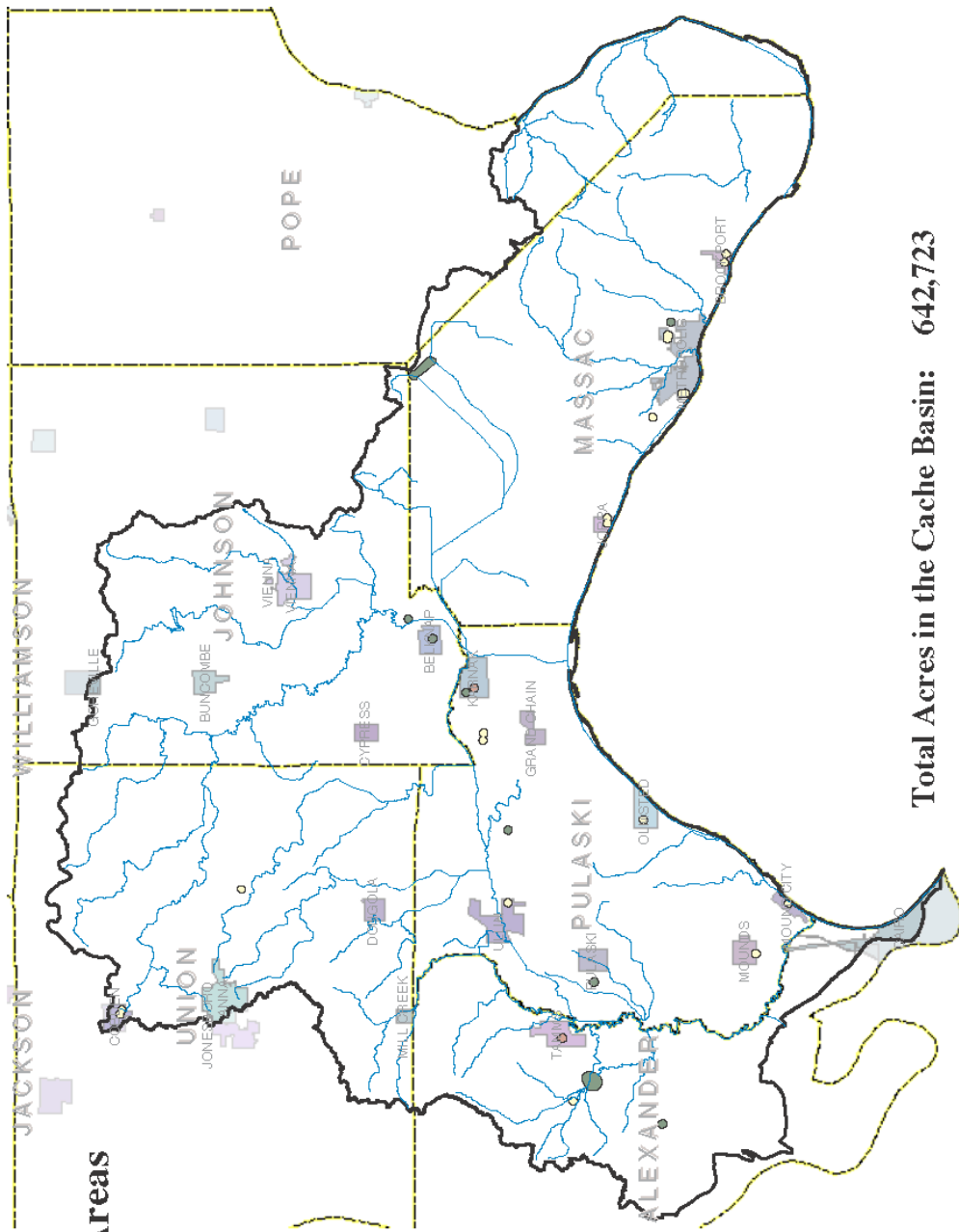


Legend

- Groundwater SWA
 - Limited (Yellow box)
 - Moderate (Green box)
 - High (Brown box)
- Stream (Blue line)
- Basin Boundary (Black outline)
- Municipal Boundary (Grey outline)
- County Boundary (Yellow dashed line)



Groundwater Source Water Areas In The Cache Basin



Total Acres in the Cache Basin: 642,723
<1% Total Source Water Area Acres: 2,683

47% Limited Susceptibility: 1,273
47% Moderate Susceptibility: 1,255
6% High Susceptibility: 156

Legend

- Groundwater SWA
 - Limited
 - Moderate
 - High
- Stream
- Basin Boundary
- Municipal Boundary
- County Boundary



ILLINOIS EPA
2004